

ZBED4 Polyclonal Antibody
Purified Rabbit Polyclonal Antibody (Pab)
Catalog # AP55197**Specification**

ZBED4 Polyclonal Antibody - Product Information

Application	WB
Primary Accession	O75132
Reactivity	Rat, Pig
Host	Rabbit
Clonality	Polyclonal
Calculated MW	130322

ZBED4 Polyclonal Antibody - Additional Information**Gene ID** 9889**Other Names**

Zinc finger BED domain-containing protein 4, ZBED4, KIAA0637

Format

0.01M TBS(pH7.4), 0.09% (W/V) sodium azide and 50% Glyce

Storage

Store at -20 °C for one year. Avoid repeated freeze/thaw cycles. When reconstituted in sterile pH 7.4 0.01M PBS or diluent of antibody the antibody is stable for at least two weeks at 2-4 °C.

ZBED4 Polyclonal Antibody - Protein Information**Name** ZBED4**Synonyms** KIAA0637**Function**

Transcriptional regulator that binds to poly-guanine tracts in gene promoters and activates transcription (By similarity). Able to bind single- and double-stranded DNA and RNA (By similarity).

Cellular Location

Nucleus. Cytoplasm Photoreceptor inner segment

Tissue Location

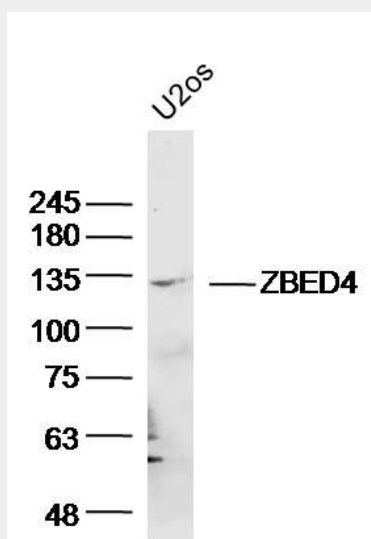
Expressed in testis, heart, lung, and weakly expressed in brain, liver, muscle, placenta and small intestine (PubMed:19369242). Expressed in the retina, found in the cone photoreceptors, Mueller cells, cone pedicles and in the innermost retinal layer (PubMed:19369242).

ZBED4 Polyclonal Antibody - Protocols

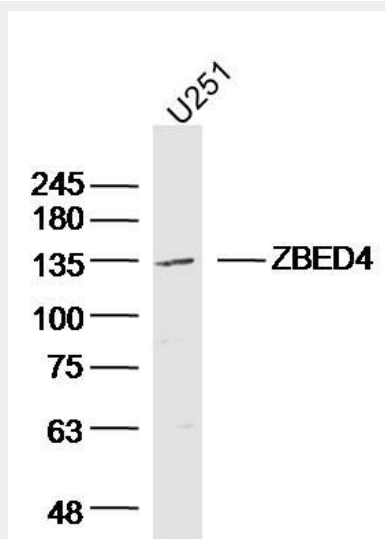
Provided below are standard protocols that you may find useful for product applications.

- [Western Blot](#)
- [Blocking Peptides](#)
- [Dot Blot](#)
- [Immunohistochemistry](#)
- [Immunofluorescence](#)
- [Immunoprecipitation](#)
- [Flow Cytometry](#)
- [Cell Culture](#)

ZBED4 Polyclonal Antibody - Images



Sample: U2os (human)cell Lysate at 40 ug
Primary: Anti- ZBED4 (bs-13554R)at 1/300 dilution
Secondary: IRDye800CW Goat Anti-Rabbit IgG at 1/20000 dilution
Predicted band size: 130 kD
Observed band size: 130 kD



Sample: U251 (human)cell Lysate at 40 ug

Primary: Anti- ZBED4 (bs-13554R) at 1/300 dilution
Secondary: IRDye800CW Goat Anti-Rabbit IgG at 1/20000 dilution
Predicted band size: 130 kD
Observed band size: 135 kD