

GPR31 Polyclonal Antibody
Purified Rabbit Polyclonal Antibody (Pab)
Catalog # AP55192

Specification

GPR31 Polyclonal Antibody - Product Information

Application	IHC-P, WB
Primary Accession	O00270
Host	Rabbit
Clonality	Polyclonal
Calculated MW	35075

GPR31 Polyclonal Antibody - Additional Information

Gene ID 2853

Other Names

12-(S)-hydroxy-5, 8, 10, 14-eicosatetraenoic acid receptor, 12-(S)-HETE receptor, 12-HETER, G-protein coupled receptor 31, GPR31/12-HETER, GPR31

Format

0.01M TBS(pH7.4), 0.09% (W/V) sodium azide and 50% Glyce

Storage

Store at -20 °C for one year. Avoid repeated freeze/thaw cycles. When reconstituted in sterile pH 7.4 0.01M PBS or diluent of antibody the antibody is stable for at least two weeks at 2-4 °C.

GPR31 Polyclonal Antibody - Protein Information

Name GPR31

Function

High-affinity receptor for 12-(S)-hydroxy-5,8,10,14- eicosatetraenoic acid (12-S-HETE), with much lower affinities for other HETE isomers (PubMed:[21712392](http://www.uniprot.org/citations/21712392), PubMed:[29227475](http://www.uniprot.org/citations/29227475)). 12-S-HETE is a eicosanoid, a 12-lipoxygenase (ALOX12) metabolite of arachidonic acid, involved in many physiologic and pathologic processes (PubMed:[26965684](http://www.uniprot.org/citations/26965684), PubMed:[28619714](http://www.uniprot.org/citations/28619714), PubMed:[29227475](http://www.uniprot.org/citations/29227475)). 12-S-HETE-binding leads to activation of ERK1/2 (MAPK3/MAPK1), MEK, and NF-kappa-B pathways leading to cell growth (PubMed:[21712392](http://www.uniprot.org/citations/21712392), PubMed:[29227475](http://www.uniprot.org/citations/29227475)). Plays a crucial role for proliferation, survival and macropinocytosis of KRAS- dependent cancer cells by mediating the translocation of KRAS from the endoplasmic reticulum to the plasma membrane (PM) and its association with the PM (PubMed:[28619714](http://www.uniprot.org/citations/28619714)).

Contributes to enhanced immune responses by inducing dendrite protrusion of small intestinal CX3CR1(+) phagocytes for the uptake of luminal antigens (By similarity). Acts also as a key receptor for 12-(S)-HETE-mediated liver ischemia reperfusion injury (PubMed:29227475).

Cellular Location

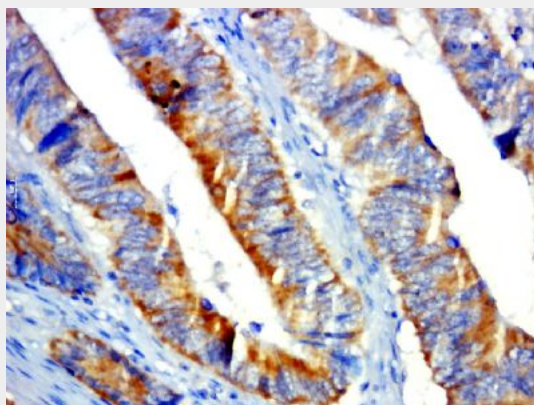
Cell membrane; Multi-pass membrane protein

GPR31 Polyclonal Antibody - Protocols

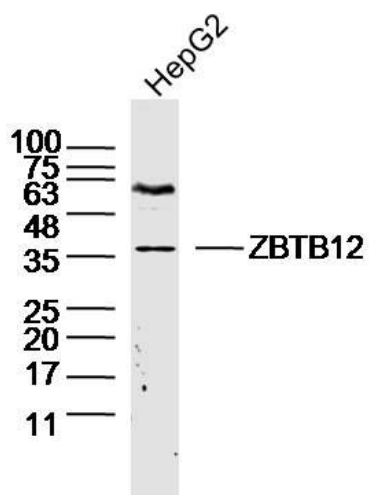
Provided below are standard protocols that you may find useful for product applications.

- [Western Blot](#)
- [Blocking Peptides](#)
- [Dot Blot](#)
- [Immunohistochemistry](#)
- [Immunofluorescence](#)
- [Immunoprecipitation](#)
- [Flow Cytometry](#)
- [Cell Culture](#)

GPR31 Polyclonal Antibody - Images



Paraformaldehyde-fixed, paraffin embedded (human colon cancer); Antigen retrieval by boiling in sodium citrate buffer (pH6.0) for 15min; Block endogenous peroxidase by 3% hydrogen peroxide for 20 minutes; Blocking buffer (normal goat serum) at 37°C for 30min; Antibody incubation with (GPR31) Polyclonal Antibody, Unconjugated (bs-13530R) at 1:500 overnight at 4°C, followed by a conjugated secondary (sp-0023) for 20 minutes and DAB staining.



Sample: HepG2 (human)Cell Lysate at 40 ug
Primary: Anti-ZBTB12(bs-13530R) at 1/300 dilution
Secondary: IRDye800CW Goat Anti-Rabbit IgG at 1/20000 dilution
Predicted band size: 35 kD
Observed band size: 36 kD