

GPR21 Polyclonal Antibody
Purified Rabbit Polyclonal Antibody (Pab)
Catalog # AP55189

Specification

GPR21 Polyclonal Antibody - Product Information

Application	WB
Primary Accession	O99679
Reactivity	Pig, Bovine
Host	Rabbit
Clonality	Polyclonal
Calculated MW	39515

GPR21 Polyclonal Antibody - Additional Information

Gene ID 2844

Other Names

Probable G-protein coupled receptor 21, GPR21

Format

0.01M TBS(pH7.4), 0.09% (W/V) sodium azide and 50% Glyce

Storage

Store at -20 °C for one year. Avoid repeated freeze/thaw cycles. When reconstituted in sterile pH 7.4 0.01M PBS or diluent of antibody the antibody is stable for at least two weeks at 2-4 °C.

GPR21 Polyclonal Antibody - Protein Information

Name GPR21

Function

Orphan receptor.

Cellular Location

Cell membrane; Multi-pass membrane protein.

Tissue Location

Not detected in the brain regions thalamus, putamen, caudate, frontal cortex, pons, hypothalamus, hippocampus

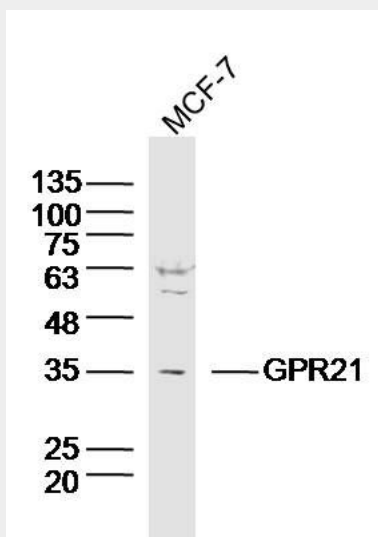
GPR21 Polyclonal Antibody - Protocols

Provided below are standard protocols that you may find useful for product applications.

- [Western Blot](#)

- [Blocking Peptides](#)
- [Dot Blot](#)
- [Immunohistochemistry](#)
- [Immunofluorescence](#)
- [Immunoprecipitation](#)
- [Flow Cytometry](#)
- [Cell Culture](#)

GPR21 Polyclonal Antibody - Images



Sample: MCF-7 (Human) cell Lysate at 40 ug
Primary: Anti-GPR21(bs-13524R) at 1/300 dilution
Secondary: IRDye800CW Goat Anti-Rabbit IgG at 1/20000 dilution
Predicted band size: 38kD
Observed band size: 35kD