

**GOLGA6 Polyclonal Antibody**  
**Purified Rabbit Polyclonal Antibody (Pab)**  
**Catalog # AP55175**

## Specification

---

### GOLGA6 Polyclonal Antibody - Product Information

Application	WB
Primary Accession	<a href="#">A6NDN3</a>
Host	Rabbit
Clonality	Polyclonal
Calculated MW	79913

### GOLGA6 Polyclonal Antibody - Additional Information

**Gene ID** 55889

#### Other Names

Golgin subfamily A member 6B, GOLGA6B, GOLGA

#### Format

0.01M TBS(pH7.4), 0.09% (W/V) sodium azide and 50% Glyce

#### Storage

Store at -20 °C for one year. Avoid repeated freeze/thaw cycles. When reconstituted in sterile pH 7.4 0.01M PBS or diluent of antibody the antibody is stable for at least two weeks at 2-4 °C.

### GOLGA6 Polyclonal Antibody - Protein Information

**Name** GOLGA6B

**Synonyms** GOLGA

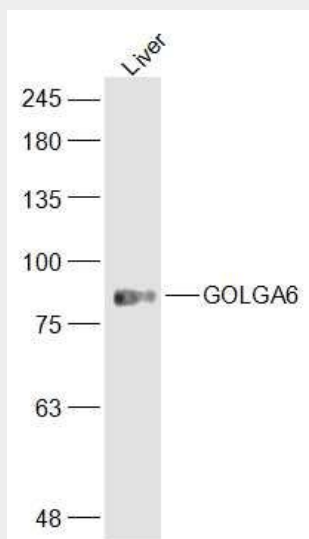
### GOLGA6 Polyclonal Antibody - Protocols

Provided below are standard protocols that you may find useful for product applications.

- [Western Blot](#)
- [Blocking Peptides](#)
- [Dot Blot](#)
- [Immunohistochemistry](#)
- [Immunofluorescence](#)
- [Immunoprecipitation](#)
- [Flow Cytometry](#)
- [Cell Culture](#)

### GOLGA6 Polyclonal Antibody - Images

---

**Sample:**

Liver (Mouse) Lysate at 40 ug

Primary: Anti-GOLGA6 (bs-13482R) at 1/300 dilution

Secondary: IRDye800CW Goat Anti-Rabbit IgG at 1/20000 dilution

Predicted band size: 80 kD

Observed band size: 80 kD