

GLEPP1 Polyclonal Antibody
Purified Rabbit Polyclonal Antibody (Pab)
Catalog # AP55148**Specification**

GLEPP1 Polyclonal Antibody - Product Information

Application	IHC-P
Primary Accession	Q16827
Reactivity	Rat, Dog
Host	Rabbit
Clonality	Polyclonal
Calculated MW	138344

GLEPP1 Polyclonal Antibody - Additional Information**Gene ID** 5800**Other Names**

Receptor-type tyrosine-protein phosphatase O, R-PTP-O, 3.1.3.48, Glomerular epithelial protein 1, Protein tyrosine phosphatase U2, PTP-U2, PTPase U2, PTPRO, GLEPP1, PTPU2

Format

0.01M TBS(pH7.4), 0.09% (W/V) sodium azide and 50% Glyce

Storage

Store at -20 °C for one year. Avoid repeated freeze/thaw cycles. When reconstituted in sterile pH 7.4 0.01M PBS or diluent of antibody the antibody is stable for at least two weeks at 2-4 °C.

GLEPP1 Polyclonal Antibody - Protein Information**Name** PTPRO**Synonyms** GLEPP1, PTPU2**Function**

Possesses tyrosine phosphatase activity. Plays a role in regulating the glomerular pressure/filtration rate relationship through an effect on podocyte structure and function (By similarity).

Cellular Location

Membrane; Single-pass type I membrane protein.

Tissue Location

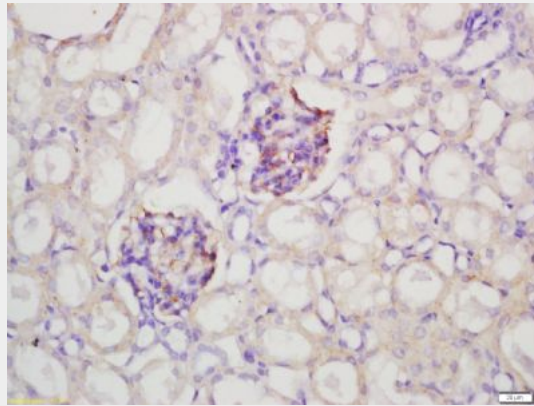
Glomerulus of kidney. Also detected in brain, lung and placenta.

GLEPP1 Polyclonal Antibody - Protocols

Provided below are standard protocols that you may find useful for product applications.

- [Western Blot](#)
- [Blocking Peptides](#)
- [Dot Blot](#)
- [Immunohistochemistry](#)
- [Immunofluorescence](#)
- [Immunoprecipitation](#)
- [Flow Cytometry](#)
- [Cell Culture](#)

GLEPP1 Polyclonal Antibody - Images



Tissue/cell: rat lung carcinoma; 4% Paraformaldehyde-fixed and paraffin-embedded;

Antigen retrieval: citrate buffer (0.01M, pH 6.0), Boiling bathing for 15min; Block endogenous peroxidase by 3% Hydrogen peroxide for 30min; Blocking buffer (normal goat serum,C-0005) at 37°C for 20 min;

Incubation: Anti-GGA2 Polyclonal Antibody, Unconjugated(bs-13344R) 1:200, overnight at 4°C, followed by conjugation to the secondary antibody(SP-0023) and DAB(C-0010) staining