

Gemin 4 Polyclonal Antibody
Purified Rabbit Polyclonal Antibody (Pab)
Catalog # AP55134

Specification

Gemin 4 Polyclonal Antibody - Product Information

Application	WB, IHC-P
Primary Accession	P57678
Reactivity	Rat, Dog
Host	Rabbit
Clonality	Polyclonal
Calculated MW	120037

Gemin 4 Polyclonal Antibody - Additional Information

Gene ID 50628

Other Names

Gem-associated protein 4, Gemin-4, Component of gems 4, p97, GEMIN4

Format

0.01M TBS(pH7.4), 0.09% (W/V) sodium azide and 50% Glyce

Storage

Store at -20 °C for one year. Avoid repeated freeze/thaw cycles. When reconstituted in sterile pH 7.4 0.01M PBS or diluent of antibody the antibody is stable for at least two weeks at 2-4 °C.

Gemin 4 Polyclonal Antibody - Protein Information

Name GEMIN4

Function

The SMN complex catalyzes the assembly of small nuclear ribonucleoproteins (snRNPs), the building blocks of the spliceosome, and thereby plays an important role in the splicing of cellular pre- mRNAs. Most spliceosomal snRNPs contain a common set of Sm proteins SNRPB, SNRPD1, SNRPD2, SNRPD3, SNRPE, SNRPF and SNRPG that assemble in a heptameric protein ring on the Sm site of the small nuclear RNA to form the core snRNP (Sm core). In the cytosol, the Sm proteins SNRPD1, SNRPD2, SNRPE, SNRPF and SNRPG are trapped in an inactive 6S pICln-Sm complex by the chaperone CLNS1A that controls the assembly of the core snRNP. To assemble core snRNPs, the SMN complex accepts the trapped 5Sm proteins from CLNS1A forming an intermediate. Binding of snRNA inside 5Sm triggers eviction of the SMN complex, thereby allowing binding of SNRPD3 and SNRPB to complete assembly of the core snRNP.

Cellular Location

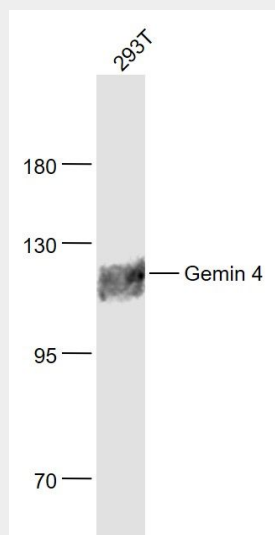
Cytoplasm. Nucleus. Nucleus, nucleolus. Nucleus, gem. Note=Localized in subnuclear structures next to coiled bodies, called gems, which are highly enriched in spliceosomal snRNPs and in the nucleolus

Gemin 4 Polyclonal Antibody - Protocols

Provided below are standard protocols that you may find useful for product applications.

- [Western Blot](#)
- [Blocking Peptides](#)
- [Dot Blot](#)
- [Immunohistochemistry](#)
- [Immunofluorescence](#)
- [Immunoprecipitation](#)
- [Flow Cytometry](#)
- [Cell Culture](#)

Gemin 4 Polyclonal Antibody - Images



Sample:

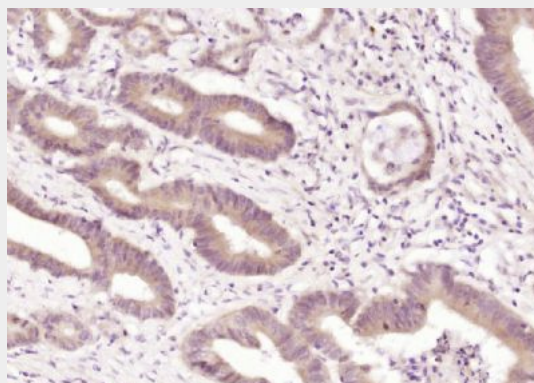
293T(Human) Cell Lysate at 30 ug

Primary: Anti- Gemin 4 (bs-13328R) at 1/1000 dilution

Secondary: IRDye800CW Goat Anti-Rabbit IgG at 1/20000 dilution

Predicted band size: 120 kD

Observed band size: 120 kD



Paraformaldehyde-fixed, paraffin embedded (human colon carcinoma); Antigen retrieval by

boiling in sodium citrate buffer (pH6.0) for 15min; Block endogenous peroxidase by 3% hydrogen peroxide for 20 minutes; Blocking buffer (normal goat serum) at 37°C for 30min; Antibody incubation with (Gemin 4) Polyclonal Antibody, Unconjugated (bs-13328R) at 1:200 overnight at 4°C, followed by operating according to SP Kit(Rabbit) (sp-0023) instructions and DAB staining.