

FUSIP1 Polyclonal Antibody
Purified Rabbit Polyclonal Antibody (Pab)
Catalog # AP55099

Specification

FUSIP1 Polyclonal Antibody - Product Information

Application	IHC-P, WB
Primary Accession	O75494
Reactivity	Rat, Pig, Dog, Bovine
Host	Rabbit
Clonality	Polyclonal
Calculated MW	31301

FUSIP1 Polyclonal Antibody - Additional Information

Gene ID 10772

Other Names

Serine/arginine-rich splicing factor 10, 40 kDa SR-repressor protein, SRrp40, FUS-interacting serine-arginine-rich protein 1, Splicing factor SRp38, Splicing factor, arginine/serine-rich 13A, TLS-associated protein with Ser-Arg repeats, TASR, TLS-associated protein with SR repeats, TLS-associated serine-arginine protein, TLS-associated SR protein, SRSF10, FUSIP1, FUSIP2, SFRS13A, TASR

Format

0.01M TBS(pH7.4), 0.09% (W/V) sodium azide and 50% Glyce

Storage

Store at -20 °C for one year. Avoid repeated freeze/thaw cycles. When reconstituted in sterile pH 7.4 0.01M PBS or diluent of antibody the antibody is stable for at least two weeks at 2-4 °C.

FUSIP1 Polyclonal Antibody - Protein Information

Name SRSF10

Synonyms FUSIP1, FUSIP2, SFRS13A, TASR

Function

Splicing factor that in its dephosphorylated form acts as a general repressor of pre-mRNA splicing (PubMed:11684676, PubMed:12419250, PubMed:14765198). Seems to interfere with the U1 snRNP 5'-splice recognition of SNRNP70 (PubMed:14765198). Required for splicing repression in M-phase cells and after heat shock (PubMed:14765198). Also acts as a splicing factor that specifically promotes exon skipping during alternative splicing (PubMed:26876937). Interaction

with YTHDC1, a RNA-binding protein that recognizes and binds N6-methyladenosine (m6A)-containing RNAs, prevents SRSF10 from binding to its mRNA-binding sites close to m6A-containing regions, leading to inhibit exon skipping during alternative splicing (PubMed:26876937). May be involved in regulation of alternative splicing in neurons, with isoform 1 acting as a positive and isoform 3 as a negative regulator (PubMed:12419250).

Cellular Location

Nucleus speckle. Cytoplasm

Tissue Location

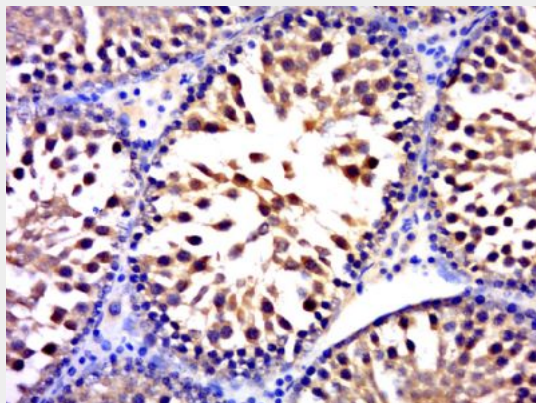
Widely expressed.

FUSIP1 Polyclonal Antibody - Protocols

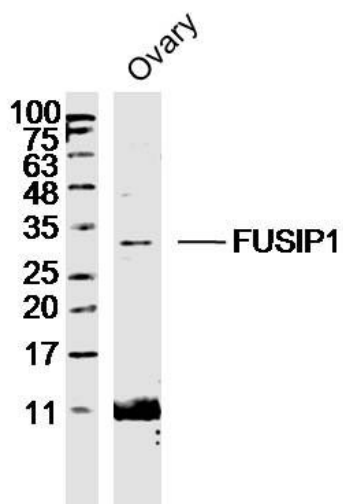
Provided below are standard protocols that you may find useful for product applications.

- [Western Blot](#)
- [Blocking Peptides](#)
- [Dot Blot](#)
- [Immunohistochemistry](#)
- [Immunofluorescence](#)
- [Immunoprecipitation](#)
- [Flow Cytometry](#)
- [Cell Culture](#)

FUSIP1 Polyclonal Antibody - Images



Paraformaldehyde-fixed, paraffin embedded (rat testis); Antigen retrieval by boiling in sodium citrate buffer (pH6.0) for 15min; Block endogenous peroxidase by 3% hydrogen peroxide for 20 minutes; Blocking buffer (normal goat serum) at 37°C for 30min; Antibody incubation with (FUSIP1) Polyclonal Antibody, Unconjugated (bs-13229R) at 1:400 overnight at 4°C, followed by a conjugated secondary (sp-0023) for 20 minutes and DAB staining.



Sample: Ovary (Mouse) Lysate at 40 ug
Primary: Anti- FUSIP1 (bs-13229R) at 1/300 dilution
Secondary: IRDye800CW Goat Anti-Rabbit IgG at 1/20000 dilution
Predicted band size: 31kD
Observed band size: 31kD