

FOPNL Polyclonal Antibody
Purified Rabbit Polyclonal Antibody (Pab)
Catalog # AP55089**Specification**

FOPNL Polyclonal Antibody - Product Information

Application	WB, IHC-P
Primary Accession	O96NB1
Reactivity	Rat, Pig, Dog, Bovine
Host	Rabbit
Clonality	Polyclonal
Calculated MW	19778

FOPNL Polyclonal Antibody - Additional Information**Gene ID** 123811**Other Names**

Centrosomal protein 20, FGFR1OP N-terminal-like protein, FOP-related protein of 20 kDa, LisH domain-containing protein FOPNL, CEP20 (http://www.genenames.org/cgi-bin/gene_symbol_report?hgnc_id=26435)
target="_blank">HGNC:26435)

Format

0.01M TBS(pH7.4), 0.09% (W/V) sodium azide and 50% Glyce

Storage

Store at -20 °C for one year. Avoid repeated freeze/thaw cycles. When reconstituted in sterile pH 7.4 0.01M PBS or diluent of antibody the antibody is stable for at least two weeks at 2-4 °C.

FOPNL Polyclonal Antibody - Protein Information**Name** CEP20 ([HGNC:26435](#))**Function**

Involved in the biogenesis of cilia (PubMed:<http://www.uniprot.org/citations/20551181>)
target="_blank">20551181). Required for the recruitment of PLK1 to centrosomes and S phase progression (PubMed:<http://www.uniprot.org/citations/24018379>)
target="_blank">24018379).

Cellular Location

Cytoplasm, cytoskeleton, microtubule organizing center, centrosome, centriole. Cell projection, cilium. Cytoplasm, cytoskeleton, cilium basal body. Cytoplasm, cytoskeleton, microtubule organizing center, centrosome. Cytoplasmic granule. Cytoplasm, cytoskeleton, microtubule organizing center, centrosome, centriolar satellite Note=Localizes to the centrosome throughout cell cycle progression (PubMed:24018379). Localization to centrioles and pericentriolar satellites may be mediated by KIAA0753/OFIP (PubMed:26643951)

Tissue Location

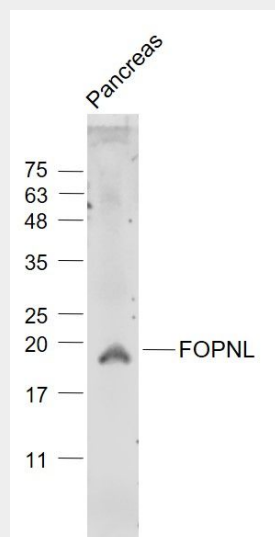
Widely expressed. Detected in brain, heart, kidney, liver, lung, skeletal muscle, placenta and intestine

FOPNL Polyclonal Antibody - Protocols

Provided below are standard protocols that you may find useful for product applications.

- [Western Blot](#)
- [Blocking Peptides](#)
- [Dot Blot](#)
- [Immunohistochemistry](#)
- [Immunofluorescence](#)
- [Immunoprecipitation](#)
- [Flow Cytometry](#)
- [Cell Culture](#)

FOPNL Polyclonal Antibody - Images



Sample:

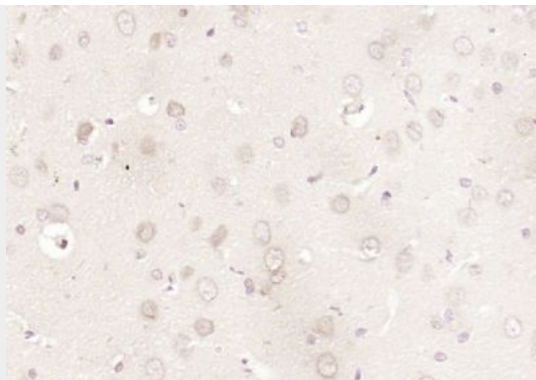
Pancreas (Mouse) Lysate at 40 ug

Primary: Anti- FOPNL (bs-13197R) at 1/1000 dilution

Secondary: IRDye800CW Goat Anti-Rabbit IgG at 1/20000 dilution

Predicted band size: 20 kD

Observed band size: 19 kD



Paraformaldehyde-fixed, paraffin embedded (rat brain); Antigen retrieval by boiling in sodium citrate buffer (pH6.0) for 15min; Block endogenous peroxidase by 3% hydrogen peroxide for 20 minutes; Blocking buffer (normal goat serum) at 37°C for 30min; Antibody incubation with (FOPNL) Polyclonal Antibody, Unconjugated (bs-13197R) at 1:200 overnight at 4°C, followed by operating according to SP Kit(Rabbit) (sp-0023) instructions and DAB staining.