

ETV3L Polyclonal Antibody
Purified Rabbit Polyclonal Antibody (Pab)
Catalog # AP55065

Specification

ETV3L Polyclonal Antibody - Product Information

Application	WB
Primary Accession	O6ZN32
Reactivity	Rat, Pig, Dog, Bovine
Host	Rabbit
Clonality	Polyclonal
Calculated MW	39948

ETV3L Polyclonal Antibody - Additional Information

Gene ID 440695

Other Names

ETS translocation variant 3-like protein, ETV3L

Format

0.01M TBS(pH7.4), 0.09% (W/V) sodium azide and 50% Glyce

Storage

Store at -20 °C for one year. Avoid repeated freeze/thaw cycles. When reconstituted in sterile pH 7.4 0.01M PBS or diluent of antibody the antibody is stable for at least two weeks at 2-4 °C.

ETV3L Polyclonal Antibody - Protein Information

Name ETV3L

Function

Transcriptional regulator.

Cellular Location

Nucleus {ECO:0000255|PROSITE-ProRule:PRU00237}.

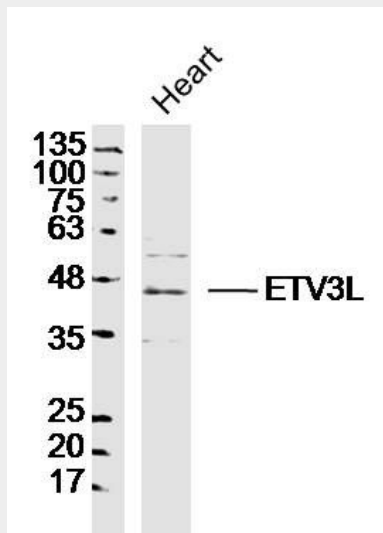
ETV3L Polyclonal Antibody - Protocols

Provided below are standard protocols that you may find useful for product applications.

- [Western Blot](#)
- [Blocking Peptides](#)
- [Dot Blot](#)
- [Immunohistochemistry](#)
- [Immunofluorescence](#)

- [Immunoprecipitation](#)
- [Flow Cytometry](#)
- [Cell Culture](#)

ETV3L Polyclonal Antibody - Images



Sample: Heart (mouse) Lysate at 40 ug
Primary: Anti-ETV3L (bs-13114R) at 1/300 dilution
Secondary: IRDye800CW Goat Anti-RabbitIgG at 1/20000 dilution
Predicted band size: 40 kD
Observed band size: 40 kD