

ETEA Polyclonal Antibody
Purified Rabbit Polyclonal Antibody (Pab)
Catalog # AP55062

Specification

ETEA Polyclonal Antibody - Product Information

Application	WB
Primary Accession	O96CS3
Reactivity	Rat
Host	Rabbit
Clonality	Polyclonal
Calculated MW	52623

ETEA Polyclonal Antibody - Additional Information

Gene ID 23197

Other Names

FAS-associated factor 2, Protein ETEA, UBX domain-containing protein 3B, UBX domain-containing protein 8, FAF2, ETEA, KIAA0887, UBXD8, UBXN3B

Format

0.01M TBS(pH7.4), 0.09% (W/V) sodium azide and 50% Glyce

Storage

Store at -20 °C for one year. Avoid repeated freeze/thaw cycles. When reconstituted in sterile pH 7.4 0.01M PBS or diluent of antibody the antibody is stable for at least two weeks at 2-4 °C.

ETEA Polyclonal Antibody - Protein Information

Name FAF2 {ECO:0000303|PubMed:34739333, ECO:0000312|HGNC:HGNC:24666}

Function

Plays an important role in endoplasmic reticulum-associated degradation (ERAD) that mediates ubiquitin-dependent degradation of misfolded endoplasmic reticulum proteins (PubMed:18711132, PubMed:24215460). By controlling the steady-state expression of the IGF1R receptor, indirectly regulates the insulin-like growth factor receptor signaling pathway (PubMed:26692333). Involved in inhibition of lipid droplet degradation by binding to phospholipase PNPL2 and inhibiting its activity by promoting dissociation of PNPL2 from its endogenous activator, ABHD5 which inhibits the rate of triacylglycerol hydrolysis (PubMed:23297223). Involved in stress granule disassembly: associates with ubiquitinated G3BP1 in response to heat shock, thereby promoting interaction between ubiquitinated G3BP1 and VCP, followed by G3BP1 extraction from stress granules and stress granule disassembly (PubMed:34739333).

Cellular Location

Cytoplasm. Lipid droplet Endoplasmic reticulum

Tissue Location

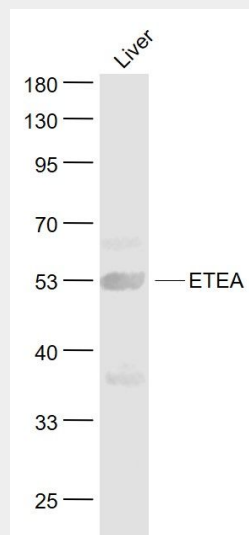
Broadly expressed, with highest levels in brain.

ETEA Polyclonal Antibody - Protocols

Provided below are standard protocols that you may find useful for product applications.

- [Western Blot](#)
- [Blocking Peptides](#)
- [Dot Blot](#)
- [Immunohistochemistry](#)
- [Immunofluorescence](#)
- [Immunoprecipitation](#)
- [Flow Cytometry](#)
- [Cell Culture](#)

ETEA Polyclonal Antibody - Images



Sample:

Liver (Mouse) Lysate at 40 ug

Primary: Anti- ETEA (bs-13109R) at 1/1000 dilution

Secondary: IRDye800CW Goat Anti-Rabbit IgG at 1/20000 dilution

Predicted band size: 53 kD

Observed band size: 53 kD