

**ENPP5 Polyclonal Antibody**  
**Purified Rabbit Polyclonal Antibody (Pab)**  
**Catalog # AP55055**

## Specification

---

### ENPP5 Polyclonal Antibody - Product Information

Application	WB
Primary Accession	<a href="#">O9UJA9</a>
Reactivity	Rat, Dog
Host	Rabbit
Clonality	Polyclonal
Calculated MW	54666

### ENPP5 Polyclonal Antibody - Additional Information

Gene ID 59084

#### Other Names

Ectonucleotide pyrophosphatase/phosphodiesterase family member 5, E-NPP 5, NPP-5, 3.1.-., ENPP5 ([HGNC:13717](http://www.genenames.org/cgi-bin/gene_symbol_report?hgnc_id=13717))

#### Format

0.01M TBS(pH7.4), 0.09% (W/V) sodium azide and 50% Glyce

#### Storage

Store at -20 °C for one year. Avoid repeated freeze/thaw cycles. When reconstituted in sterile pH 7.4 0.01M PBS or diluent of antibody the antibody is stable for at least two weeks at 2-4 °C.

### ENPP5 Polyclonal Antibody - Protein Information

Name ENPP5 ([HGNC:13717](#))

#### Function

Can hydrolyze NAD but cannot hydrolyze nucleotide di- and triphosphates. Lacks lysopholipase D activity. May play a role in neuronal cell communication.

#### Cellular Location

Secreted. Membrane; Single-pass membrane protein

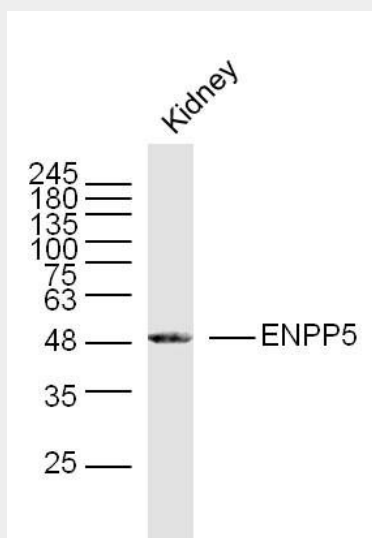
### ENPP5 Polyclonal Antibody - Protocols

Provided below are standard protocols that you may find useful for product applications.

- [Western Blot](#)
- [Blocking Peptides](#)

- [Dot Blot](#)
- [Immunohistochemistry](#)
- [Immunofluorescence](#)
- [Immunoprecipitation](#)
- [Flow Cytometry](#)
- [Cell Culture](#)

### ENPP5 Polyclonal Antibody - Images



Sample: kidney (Mouse) Lysate at 40 ug  
Primary: Anti-ENPP5(bs-13075R) at 1/300 dilution  
Secondary: IRDye800CW Goat Anti-Rabbit IgG at 1/20000 dilution  
Predicted band size: 52 kD  
Observed band size: 50 kD