

CTRP2 Polyclonal Antibody
Purified Rabbit Polyclonal Antibody (Pab)
Catalog # AP55023**Specification**

CTRP2 Polyclonal Antibody - Product Information

Application	IHC-P
Primary Accession	O9BXJ5
Reactivity	Rat, Pig, Bovine
Host	Rabbit
Clonality	Polyclonal
Calculated MW	29952

CTRP2 Polyclonal Antibody - Additional Information**Gene ID** 114898**Other Names**

Complement C1q tumor necrosis factor-related protein 2, C1QTNF2, CTRP2

Format

0.01M TBS(pH7.4), 0.09% (W/V) sodium azide and 50% Glyce

Storage

Store at -20 °C for one year. Avoid repeated freeze/thaw cycles. When reconstituted in sterile pH 7.4 0.01M PBS or diluent of antibody the antibody is stable for at least two weeks at 2-4 °C.

CTRP2 Polyclonal Antibody - Protein Information**Name** C1QTNF2**Synonyms** CTRP2**Function**

Involved in the regulation of lipid metabolism in adipose tissue and liver.

Cellular Location

Secreted.

Tissue Location

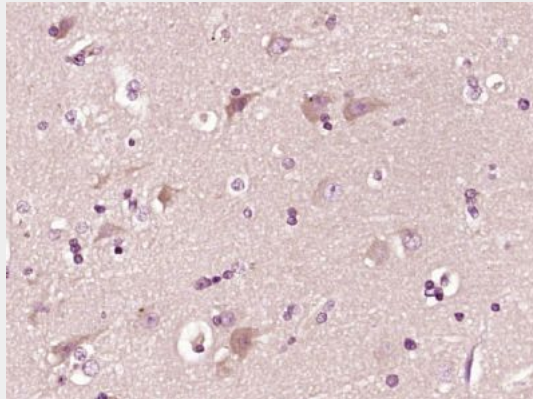
Expressed in adipose tissue.

CTRP2 Polyclonal Antibody - Protocols

Provided below are standard protocols that you may find useful for product applications.

- [Western Blot](#)
- [Blocking Peptides](#)
- [Dot Blot](#)
- [Immunohistochemistry](#)
- [Immunofluorescence](#)
- [Immunoprecipitation](#)
- [Flow Cytometry](#)
- [Cell Culture](#)

CTRP2 Polyclonal Antibody - Images



Paraformaldehyde-fixed, paraffin embedded (human brain glioma); Antigen retrieval by boiling in sodium citrate buffer (pH6.0) for 15min; Block endogenous peroxidase by 3% hydrogen peroxide for 20 minutes; Blocking buffer (normal goat serum) at 37°C for 30min; Antibody incubation with (CTRP2) Polyclonal Antibody, Unconjugated (bs-12934R) at 1:400 overnight at 4°C, followed by operating according to SP Kit(Rabbit) (sp-0023) instructions and DAB staining.