

**MTCH2 Antibody (N-term)**  
**Affinity Purified Rabbit Polyclonal Antibody (Pab)**  
**Catalog # AP5492a**

**Specification**

---

**MTCH2 Antibody (N-term) - Product Information**

Application	<b>WB, IHC-P,E</b>
Primary Accession	<a href="#">O9Y6C9</a>
Other Accession	<a href="#">NP_055157.1</a>
Reactivity	<b>Human, Mouse</b>
Host	<b>Rabbit</b>
Clonality	<b>Polyclonal</b>
Isotype	<b>Rabbit IgG</b>
Calculated MW	<b>33331</b>
Antigen Region	<b>75-103</b>

**MTCH2 Antibody (N-term) - Additional Information**

**Gene ID** 23788

**Other Names**

Mitochondrial carrier homolog 2, Met-induced mitochondrial protein, MTCH2, MIMP

**Target/Specificity**

This MTCH2 antibody is generated from rabbits immunized with a KLH conjugated synthetic peptide between 75-103 amino acids from the N-terminal region of human MTCH2.

**Dilution**

WB~~1:1000  
IHC-P~~1:50~100

**Format**

Purified polyclonal antibody supplied in PBS with 0.09% (W/V) sodium azide. This antibody is purified through a protein A column, followed by peptide affinity purification.

**Storage**

Maintain refrigerated at 2-8°C for up to 2 weeks. For long term storage store at -20°C in small aliquots to prevent freeze-thaw cycles.

**Precautions**

MTCH2 Antibody (N-term) is for research use only and not for use in diagnostic or therapeutic procedures.

**MTCH2 Antibody (N-term) - Protein Information**

**Name** MTCH2 {ECO:0000303|PubMed:36264797, ECO:0000312|HGNC:HGNC:17587}

**Function** Protein insertase that mediates insertion of transmembrane proteins into the

mitochondrial outer membrane (PubMed:[36264797](#)). Catalyzes insertion of proteins with alpha-helical transmembrane regions, such as signal-anchored, tail-anchored and multi-pass membrane proteins (PubMed:[36264797](#)). Does not mediate insertion of beta-barrel transmembrane proteins (PubMed:[36264797](#)). Also acts as a receptor for the truncated form of pro-apoptotic BH3-interacting domain death agonist (p15 BID) and has therefore a critical function in apoptosis (By similarity). Regulates the quiescence/cycling of hematopoietic stem cells (HSCs) (By similarity). Acts as a regulator of mitochondrial fusion, essential for the naive-to-primed interconversion of embryonic stem cells (ESCs) (By similarity). Acts as a regulator of lipid homeostasis and has a regulatory role in adipocyte differentiation and biology (By similarity).

#### Cellular Location

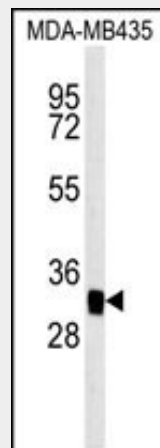
Mitochondrion outer membrane; Multi-pass membrane protein

#### MTCH2 Antibody (N-term) - Protocols

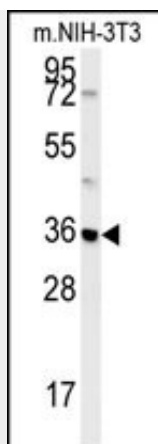
Provided below are standard protocols that you may find useful for product applications.

- [Western Blot](#)
- [Blocking Peptides](#)
- [Dot Blot](#)
- [Immunohistochemistry](#)
- [Immunofluorescence](#)
- [Immunoprecipitation](#)
- [Flow Cytometry](#)
- [Cell Culture](#)

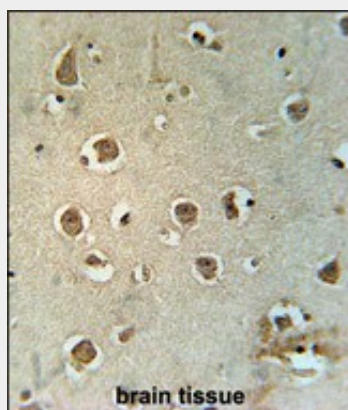
#### MTCH2 Antibody (N-term) - Images



MTCH2 Antibody (N-term) (Cat.#AP5492a) western blot analysis in MDA-MB435 cell line lysates (35ug/lane). This demonstrates the MTCH2 antibody detected the MTCH2 protein (arrow).



MTCH2 Antibody (N-term) (Cat.#AP5492a) western blot analysis in mouse NIH-3T3 cell line lysates (35ug/lane). This demonstrates the MTCH2 antibody detected the MTCH2 protein (arrow).



MTCH2 Antibody (N-term) (Cat. #AP5492a) immunohistochemistry analysis in formalin fixed and paraffin embedded human brain tissue followed by peroxidase conjugation of the secondary antibody and DAB staining. This data demonstrates the use of the MTCH2 Antibody (N-term) for immunohistochemistry. Clinical relevance has not been evaluated.

#### **MTCH2 Antibody (N-term) - Background**

The substrate transported is not yet known. It induces mitochondrial depolarization.

#### **MTCH2 Antibody (N-term) - References**

- Ng, M.C., et al. J. Clin. Endocrinol. Metab. (2010)  
He, M., et al. Arterioscler. Thromb. Vasc. Biol. 30(2):327-332(2010)  
Li, S., et al. Am. J. Clin. Nutr. 91(1):184-190(2010)

#### **MTCH2 Antibody (N-term) - Citations**

- [Rapid degradation of mutant SLC25A46 by the ubiquitin-proteasome system results in MFN1/2 mediated hyperfusion of mitochondria.](#)