

**TMPRSS11A Polyclonal Antibody**  
**Purified Rabbit Polyclonal Antibody (Pab)**  
**Catalog # AP54928**

**Specification**

---

**TMPRSS11A Polyclonal Antibody - Product Information**

Application	WB
Primary Accession	<a href="#">O6ZMR5</a>
Host	Rabbit
Clonality	Polyclonal
Calculated MW	47226

**TMPRSS11A Polyclonal Antibody - Additional Information**

**Gene ID** 339967

**Other Names**

Transmembrane protease serine 11A, 3.4.21.-, Airway trypsin-like protease 1, Epidermal type-II transmembrane serine protease, Esophageal cancer-susceptibility gene 1 protein, TMPRSS11A, ECRG1, HATL1, HESP

**Format**

0.01M TBS(pH7.4), 0.09% (W/V) sodium azide and 50% Glyce

**Storage**

Store at -20 °C for one year. Avoid repeated freeze/thaw cycles. When reconstituted in sterile pH 7.4 0.01M PBS or diluent of antibody the antibody is stable for at least two weeks at 2-4 °C.

**TMPRSS11A Polyclonal Antibody - Protein Information**

**Name** TMPRSS11A

**Synonyms** ECRG1, HATL1, HESP

**Function**

Probable serine protease which may play a role in cellular senescence. Overexpression inhibits cell growth and induce G1 cell cycle arrest.

**Cellular Location**

Membrane; Single-pass type II membrane protein

**Tissue Location**

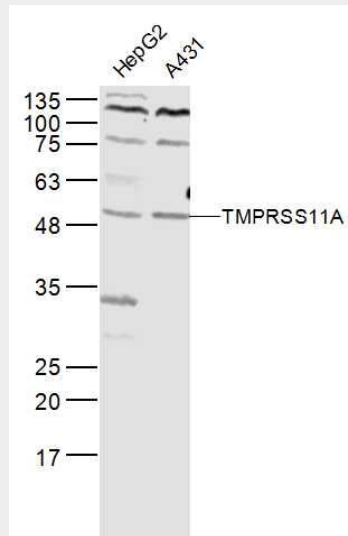
Expressed in esophagus, liver, colon and lung. Down-regulated in esophagus cancers.

**TMPRSS11A Polyclonal Antibody - Protocols**

Provided below are standard protocols that you may find useful for product applications.

- [Western Blot](#)
- [Blocking Peptides](#)
- [Dot Blot](#)
- [Immunohistochemistry](#)
- [Immunofluorescence](#)
- [Immunoprecipitation](#)
- [Flow Cytometry](#)
- [Cell Culture](#)

### TMPRSS11A Polyclonal Antibody - Images



#### Sample:

HepG2(Human) Cell Lysate at 40 ug

A431(Human) Cell Lysate at 40 ug

Primary: Anti-TMPRSS11A (bs-12671R) at 1/300 dilution

Secondary: IRDye800CW Goat Anti-Rabbit IgG at 1/20000 dilution

Predicted band size: 48 kD

Observed band size: 48 kD