

PEPP2 Polyclonal Antibody
Purified Rabbit Polyclonal Antibody (Pab)
Catalog # AP54904

Specification

PEPP2 Polyclonal Antibody - Product Information

Application	WB
Primary Accession	O9HAU0
Host	Rabbit
Clonality	Polyclonal
Calculated MW	127464

PEPP2 Polyclonal Antibody - Additional Information

Gene ID 54477

Other Names

Pleckstrin homology domain-containing family A member 5, PH domain-containing family A member 5, Phosphoinositol 3-phosphate-binding protein 2, PEPP-2, PLEKHA5, KIAA1686, PEPP2

Format

0.01M TBS(pH7.4), 0.09% (W/V) sodium azide and 50% Glyce

Storage

Store at -20 °C for one year. Avoid repeated freeze/thaw cycles. When reconstituted in sterile pH 7.4 0.01M PBS or diluent of antibody the antibody is stable for at least two weeks at 2-4 °C.

PEPP2 Polyclonal Antibody - Protein Information

Name PLEKHA5

Synonyms KIAA1686, PEPP2

Cellular Location

Cytoplasm.

Tissue Location

Highly expressed in heart and kidney.

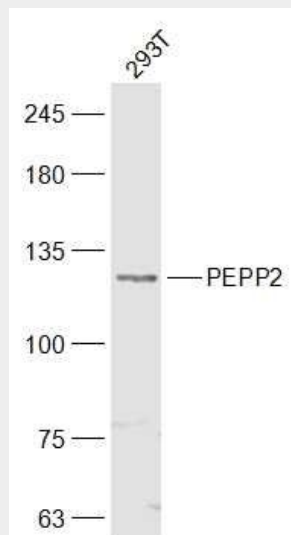
PEPP2 Polyclonal Antibody - Protocols

Provided below are standard protocols that you may find useful for product applications.

- [Western Blot](#)
- [Blocking Peptides](#)
- [Dot Blot](#)

- [Immunohistochemistry](#)
- [Immunofluorescence](#)
- [Immunoprecipitation](#)
- [Flow Cytometry](#)
- [Cell Culture](#)

PEPP2 Polyclonal Antibody - Images



Sample:

293T(Human) Cell Lysate at 30 ug

Primary: Anti-PEPP2 (bs-12617R) at 1/300 dilution

Secondary: IRDye800CW Goat Anti-Rabbit IgG at 1/20000 dilution

Predicted band size: 127 kD

Observed band size: 127 kD