

ARIH2 Polyclonal Antibody
Purified Rabbit Polyclonal Antibody (Pab)
Catalog # AP54877

Specification

ARIH2 Polyclonal Antibody - Product Information

Application	WB
Primary Accession	O95376
Reactivity	Rat, Pig, Bovine
Host	Rabbit
Clonality	Polyclonal
Calculated MW	57819

ARIH2 Polyclonal Antibody - Additional Information

Gene ID 10425

Other Names

E3 ubiquitin-protein ligase ARIH2, ARI-2, Protein ariadne-2 homolog, 2.3.2.31, RING-type E3 ubiquitin transferase ARIH2, Triad1 protein, ARIH2, ARI2, TRIAD1
{ECO:0000303|PubMed:16118314}

Format

0.01M TBS(pH7.4), 0.09% (W/V) sodium azide and 50% Glyce

Storage

Store at -20 °C for one year. Avoid repeated freeze/thaw cycles. When reconstituted in sterile pH 7.4 0.01M PBS or diluent of antibody the antibody is stable for at least two weeks at 2-4 °C.

ARIH2 Polyclonal Antibody - Protein Information

Name ARIH2

Synonyms ARI2, TRIAD1 {ECO:0000303|PubMed:1611831}

Function

E3 ubiquitin-protein ligase, which catalyzes ubiquitination of target proteins together with ubiquitin-conjugating enzyme E2 UBE2L3 (PubMed: 16118314, PubMed: 17646546, PubMed: 19340006, PubMed: 24076655). Acts as an atypical E3 ubiquitin-protein ligase by working together with cullin-5-RING ubiquitin ligase complex (ECS complex, also named CRL5 complex) and initiating ubiquitination of ECS substrates: associates with ECS complex and specifically mediates addition of the first ubiquitin on ECS targets (By similarity). The initial ubiquitin is then elongated (By similarity). E3 ubiquitin-protein ligase activity is activated upon binding to neddylated form of the ECS complex (PubMed: 24076655). Mediates

'Lys-6', 'Lys-48'- and 'Lys-63'-linked polyubiquitination (PubMed:16118314, PubMed:17646546, PubMed:19340006). May play a role in myelopoiesis (PubMed:19340006).

Cellular Location

Nucleus. Cytoplasm

Tissue Location

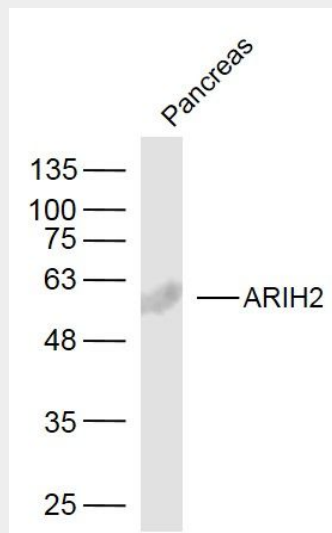
Widely expressed with higher expression in granulocytes.

ARIH2 Polyclonal Antibody - Protocols

Provided below are standard protocols that you may find useful for product applications.

- [Western Blot](#)
- [Blocking Peptides](#)
- [Dot Blot](#)
- [Immunohistochemistry](#)
- [Immunofluorescence](#)
- [Immunoprecipitation](#)
- [Flow Cytometry](#)
- [Cell Culture](#)

ARIH2 Polyclonal Antibody - Images



Sample:

Pancreas (Mouse) Lysate at 40 ug

Primary: Anti-ARIH2 (bs-12521R) at 1/300 dilution

Secondary: IRDye800CW Goat Anti-Rabbit IgG at 1/20000 dilution

Predicted band size: 58 kD

Observed band size: 58 kD