

**HFE Polyclonal Antibody**  
**Purified Rabbit Polyclonal Antibody (Pab)**  
**Catalog # AP54828**

**Specification**

---

**HFE Polyclonal Antibody - Product Information**

Application	FC
Primary Accession	<a href="#">Q30201</a>
Reactivity	Rat, Dog, Bovine
Host	Rabbit
Clonality	Polyclonal
Calculated MW	40108

**HFE Polyclonal Antibody - Additional Information**

**Gene ID** 3077

**Other Names**

Hereditary hemochromatosis protein, HLA-H, HFE, HLAH

**Format**

0.01M TBS(pH7.4), 0.09% (W/V) sodium azide and 50% Glyce

**Storage**

Store at -20 °C for one year. Avoid repeated freeze/thaw cycles. When reconstituted in sterile pH 7.4 0.01M PBS or diluent of antibody the antibody is stable for at least two weeks at 2-4 °C.

**HFE Polyclonal Antibody - Protein Information**

**Name** HFE

**Synonyms** HLAH

**Function**

Binds to transferrin receptor (TFR) and reduces its affinity for iron-loaded transferrin.

**Cellular Location**

Cell membrane; Single-pass type I membrane protein

**Tissue Location**

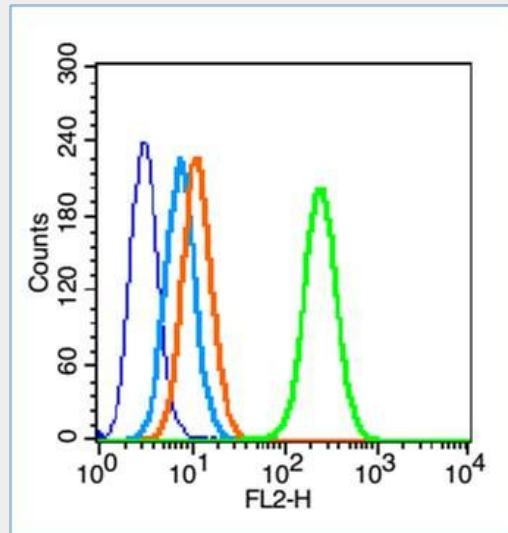
Expressed in all tissues tested except brain.

**HFE Polyclonal Antibody - Protocols**

Provided below are standard protocols that you may find useful for product applications.

- [Western Blot](#)
- [Blocking Peptides](#)
- [Dot Blot](#)
- [Immunohistochemistry](#)
- [Immunofluorescence](#)
- [Immunoprecipitation](#)
- [Flow Cytometry](#)
- [Cell Culture](#)

### HFE Polyclonal Antibody - Images



Blank control (blue line): HL60(fixed with 70% ethanol Overnight at 4°C).

Primary Antibody (green line): Rabbit Anti-iHFE antibody (bs-12335R),Dilution: 0.2 µg /10<sup>6</sup> cells;

Isotype Control Antibody (orange line): Rabbit IgG .

Secondary Antibody (white blue line): Goat anti-rabbit IgG-PE,Dilution: 1 µg /test.