

PBX1 Polyclonal Antibody
Purified Rabbit Polyclonal Antibody (Pab)
Catalog # AP54814**Specification**

PBX1 Polyclonal Antibody - Product Information

Application	WB
Primary Accession	P40424
Reactivity	Rat, Dog, Bovine
Host	Rabbit
Clonality	Polyclonal
Calculated MW	46626

PBX1 Polyclonal Antibody - Additional Information**Gene ID** 5087**Other Names**

Pre-B-cell leukemia transcription factor 1, Homeobox protein PBX1, Homeobox protein PRL, PBX1, PRL

Format

0.01M TBS(pH7.4), 0.09% (W/V) sodium azide and 50% Glyce

Storage

Store at -20 °C for one year. Avoid repeated freeze/thaw cycles. When reconstituted in sterile pH 7.4 0.01M PBS or diluent of antibody the antibody is stable for at least two weeks at 2-4 °C.

PBX1 Polyclonal Antibody - Protein Information**Name** PBX1**Synonyms** PRL**Function**

Transcription factor which binds the DNA sequence 5'- TGATTGAT-3' as part of a heterodimer with HOX proteins such as HOXA1, HOXA5, HOXB7 and HOXB8 (PubMed:9191052). Binds to the DNA sequence 5'- TGATTGAC-3' in complex with a nuclear factor which is not a class I HOX protein (PubMed:9191052). Has also been shown to bind the DNA sequence 5'-ATCAATCAA-3' cooperatively with HOXA5, HOXB7, HOXB8, HOXC8 and HOXD4 (PubMed:7791786, PubMed:8327485). Acts as a transcriptional activator of PF4 in complex with MEIS1 (PubMed:12609849). Also activates transcription of SOX3 in complex with MEIS1 by binding to the 5'- TGATTGAC-3' consensus sequence (By similarity). In natural killer cells, binds to the NFIL3 promoter and acts as a transcriptional activator of NFIL3, promoting natural killer cell development (By similarity). Plays

a role in the cAMP-dependent regulation of CYP17A1 gene expression via its cAMP-regulatory sequence (CRS1) (By similarity). Probably in complex with MEIS2, involved in transcriptional regulation by KLF4 (PubMed:21746878). Acts as a transcriptional activator of NKX2-5 and a transcriptional repressor of CDKN2B (By similarity). Together with NKX2-5, required for spleen development through a mechanism that involves CDKN2B repression (By similarity).

Cellular Location

Nucleus.

Tissue Location

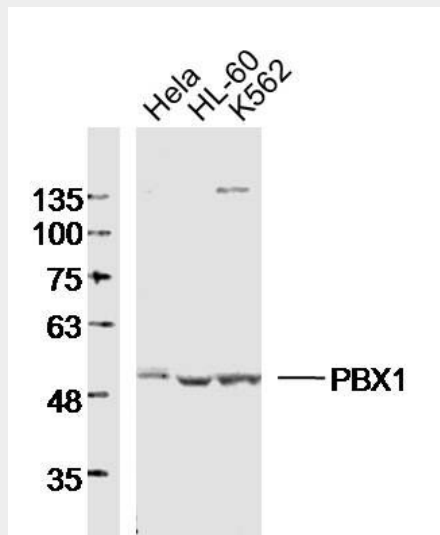
Expressed in the kidney. Expressed in the endothelial cells of the glomeruli and interstitium (at protein level) (PubMed:28270404). Expressed in all tissues except in cells of the B and T lineage. Expressed strongly in kidney and brain (PubMed:28270404).

PBX1 Polyclonal Antibody - Protocols

Provided below are standard protocols that you may find useful for product applications.

- [Western Blot](#)
- [Blocking Peptides](#)
- [Dot Blot](#)
- [Immunohistochemistry](#)
- [Immunofluorescence](#)
- [Immunoprecipitation](#)
- [Flow Cytometry](#)
- [Cell Culture](#)

PBX1 Polyclonal Antibody - Images



Sample:

Hela Cell (Human) Lysate at 30 ug
HL-60 Cell (Human) Lysate at 30 ug
K562 Cell (Human) Lysate at 30 ug
Primary: Anti-PBX1 (bs-12296R) at 1/300 dilution
Secondary: IRDye800CW Goat Anti-Rabbit IgG at 1/20000 dilution
Predicted band size: 47kD

Observed band size: 50kD