

**CCDC146 Antibody (N-term)**  
**Affinity Purified Rabbit Polyclonal Antibody (Pab)**  
**Catalog # AP5462a**

**Specification**

---

**CCDC146 Antibody (N-term) - Product Information**

Application	WB,E
Primary Accession	<a href="#">Q8IYE0</a>
Other Accession	<a href="#">NP_065930.2</a>
Reactivity	Human
Host	Rabbit
Clonality	Polyclonal
Isotype	Rabbit IgG
Calculated MW	112806
Antigen Region	113-141

**CCDC146 Antibody (N-term) - Additional Information**

**Gene ID** 57639

**Other Names**

Coiled-coil domain-containing protein 146, CCDC146, KIAA1505

**Target/Specificity**

This CCDC146 antibody is generated from rabbits immunized with a KLH conjugated synthetic peptide between 113-141 amino acids from the N-terminal region of human CCDC146.

**Dilution**

WB~~1:1000

**Format**

Purified polyclonal antibody supplied in PBS with 0.09% (W/V) sodium azide. This antibody is purified through a protein A column, followed by peptide affinity purification.

**Storage**

Maintain refrigerated at 2-8°C for up to 2 weeks. For long term storage store at -20°C in small aliquots to prevent freeze-thaw cycles.

**Precautions**

CCDC146 Antibody (N-term) is for research use only and not for use in diagnostic or therapeutic procedures.

**CCDC146 Antibody (N-term) - Protein Information**

**Name** CCDC146

**Synonyms** KIAA1505

**Function** Essential for sperm flagellum biogenesis and male fertility.

#### **Cellular Location**

Cytoplasm, cytoskeleton, microtubule organizing center, centrosome, centriole. Cytoplasm, cytoskeleton, flagellum axoneme Cytoplasm, cytoskeleton, cilium basal body. Midbody Note=In sperm cells, was seen localized to only one centriole identified as the mother centriole by co-staining with CEP164 (PubMed:25074808). In other experiments, localization to centrioles in sperm cells was not observed (PubMed:38441556). Localizes to the sperm connecting piece and flagellum during spermiogenesis and to the flagellum in spermatozoa from cauda of the epididymis (By similarity) In sperm cell flagellum, may be associated with tubulin doublets (PubMed:38441556). {ECO:0000250|UniProtKB:E9Q9F7, ECO:0000269|PubMed:25074808, ECO:0000269|PubMed:38441556}

#### **Tissue Location**

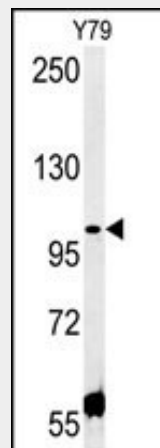
Widely expressed..

### **CCDC146 Antibody (N-term) - Protocols**

Provided below are standard protocols that you may find useful for product applications.

- [Western Blot](#)
- [Blocking Peptides](#)
- [Dot Blot](#)
- [Immunohistochemistry](#)
- [Immunofluorescence](#)
- [Immunoprecipitation](#)
- [Flow Cytometry](#)
- [Cell Culture](#)

### **CCDC146 Antibody (N-term) - Images**



CCDC146 Antibody (N-term) (Cat.#AP5462a) western blot analysis in Y79 cell line lysates (35ug/lane). This demonstrates the CCDC146 antibody detected the CCDC146 protein (arrow).

### **CCDC146 Antibody (N-term) - Background**

The function of CCDC146 remains unknown.

### **CCDC146 Antibody (N-term) - References**

Kimura, K., et al. Genome Res. 16(1):55-65(2006)