

GRC5 Polyclonal Antibody
Purified Rabbit Polyclonal Antibody (Pab)
Catalog # AP54585

Specification

GRC5 Polyclonal Antibody - Product Information

Application	WB
Primary Accession	O75151
Reactivity	Rat
Host	Rabbit
Clonality	Polyclonal
Calculated MW	120775

GRC5 Polyclonal Antibody - Additional Information

Gene ID 5253

Other Names

Lysine-specific demethylase PHF2, 1.14.11.-, GRC5, PHD finger protein 2, PHF2 ([HGNC:8920](http://www.genenames.org/cgi-bin/gene_symbol_report?hgnc_id=8920))

Format

0.01M TBS(pH7.4), 0.09% (W/V) sodium azide and 50% Glyce

Storage

Store at -20 °C for one year. Avoid repeated freeze/thaw cycles. When reconstituted in sterile pH 7.4 0.01M PBS or diluent of antibody the antibody is stable for at least two weeks at 2-4 °C.

GRC5 Polyclonal Antibody - Protein Information

Name PHF2 ([HGNC:8920](#))

Function

Lysine demethylase that demethylates both histones and non-histone proteins (PubMed:[20129925](http://www.uniprot.org/citations/20129925), PubMed:[21167174](http://www.uniprot.org/citations/21167174), PubMed:[21532585](http://www.uniprot.org/citations/21532585)). Enzymatically inactive by itself, and becomes active following phosphorylation by PKA: forms a complex with ARID5B and mediates demethylation of methylated ARID5B (PubMed:[21532585](http://www.uniprot.org/citations/21532585)). Demethylation of ARID5B leads to target the PHF2-ARID5B complex to target promoters, where PHF2 mediates demethylation of dimethylated 'Lys-9' of histone H3 (H3K9me2), followed by transcription activation of target genes (PubMed:[21532585](http://www.uniprot.org/citations/21532585)). The PHF2-ARID5B complex acts as a coactivator of HNF4A in liver. PHF2 is recruited to trimethylated 'Lys-4' of histone H3 (H3K4me3) at rDNA promoters and promotes expression of rDNA (PubMed:[21532585](http://www.uniprot.org/citations/21532585)). Involved in

the activation of toll-like receptor 4 (TLR4)-target inflammatory genes in macrophages by catalyzing the demethylation of trimethylated histone H4 lysine 20 (H4K20me3) at the gene promoters (By similarity).

Cellular Location

Nucleus, nucleolus. Chromosome, centromere, kinetochore

Tissue Location

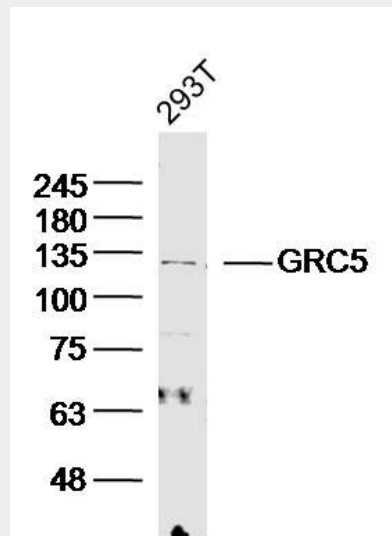
Widely expressed, including in liver (at protein level).

GRC5 Polyclonal Antibody - Protocols

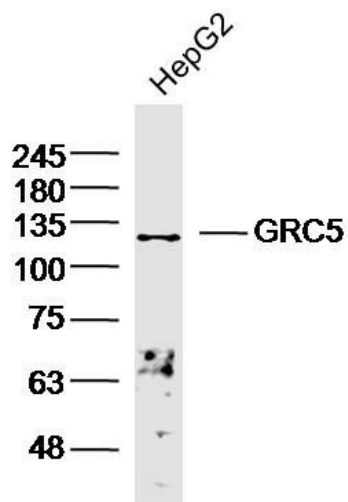
Provided below are standard protocols that you may find useful for product applications.

- [Western Blot](#)
- [Blocking Peptides](#)
- [Dot Blot](#)
- [Immunohistochemistry](#)
- [Immunofluorescence](#)
- [Immunoprecipitation](#)
- [Flow Cytometry](#)
- [Cell Culture](#)

GRC5 Polyclonal Antibody - Images



Sample: 293T Cell (Human) Lysate at 30 ug
Primary: Anti- GRC5 (bs-11659R) at 1/300 dilution
Secondary: IRDye800CW Goat Anti-Rabbit IgG at 1/20000 dilution
Predicted band size: 121kD
Observed band size: 121kD



Sample: HepG2 Cell (Human) Lysate at 30 ug
Primary: Anti- GRC5 (bs-11659R) at 1/300 dilution
Secondary: IRDye800CW Goat Anti-Rabbit IgG at 1/20000 dilution
Predicted band size: 121kD
Observed band size: 121kD