

PDE7A Polyclonal Antibody
Purified Rabbit Polyclonal Antibody (Pab)
Catalog # AP54552

Specification

PDE7A Polyclonal Antibody - Product Information

Application	FC, IHC-P, WB
Primary Accession	Q13946
Reactivity	Rat, Pig, Dog, Bovine
Host	Rabbit
Clonality	Polyclonal
Calculated MW	55505

PDE7A Polyclonal Antibody - Additional Information

Gene ID 5150

Other Names

High affinity cAMP-specific 3', 5'-cyclic phosphodiesterase 7A, 3.1.4.53, HCP1, TM22, PDE7A

Format

0.01M TBS(pH7.4), 0.09% (W/V) sodium azide and 50% Glyce

Storage

Store at -20 °C for one year. Avoid repeated freeze/thaw cycles. When reconstituted in sterile pH 7.4 0.01M PBS or diluent of antibody the antibody is stable for at least two weeks at 2-4 °C.

PDE7A Polyclonal Antibody - Protein Information

Name PDE7A {ECO:0000303|PubMed:9195912, ECO:0000312|HGNC:HGNC:8791}

Function

Hydrolyzes the second messenger cAMP, which is a key regulator of many important physiological processes (PubMed:19350606, PubMed:8389765, PubMed:9195912). May have a role in muscle signal transduction (PubMed:9195912).

Cellular Location

[Isoform PDE7A1]: Cytoplasm, cytosol. Note=PDE7A1 (57 kDa) is located mostly to soluble cellular fractions.

Tissue Location

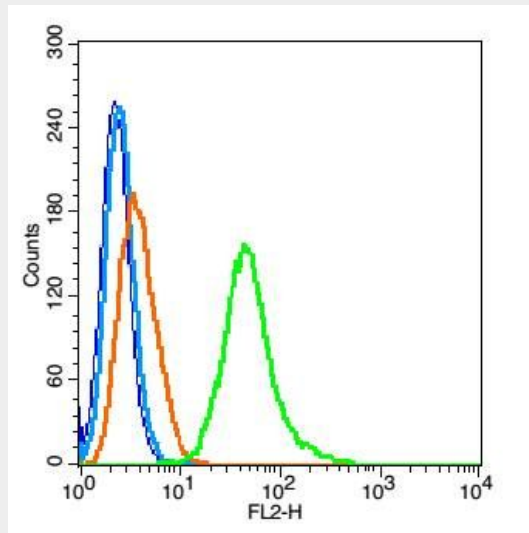
[Isoform PDE7A1]: Found at high levels in skeletal muscle and at low levels in a variety of tissues including brain and heart (PubMed:9195912). It is expressed as well in two T-cell lines (PubMed:9195912).

PDE7A Polyclonal Antibody - Protocols

Provided below are standard protocols that you may find useful for product applications.

- [Western Blot](#)
- [Blocking Peptides](#)
- [Dot Blot](#)
- [Immunohistochemistry](#)
- [Immunofluorescence](#)
- [Immunoprecipitation](#)
- [Flow Cytometry](#)
- [Cell Culture](#)

PDE7A Polyclonal Antibody - Images

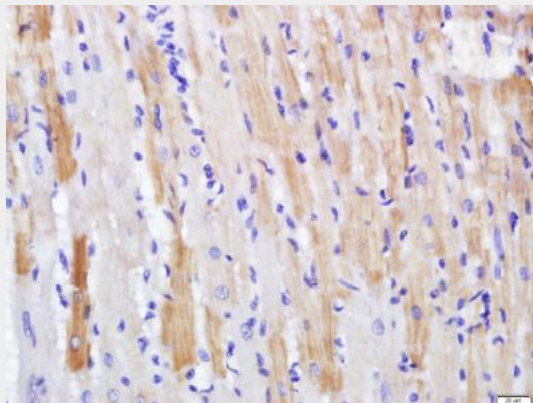


Blank control(blue): RSC96 cells(fixed with 2% paraformaldehyde (10 min) , then permeabilized with 90% ice-cold methanol for 30 min on ice).

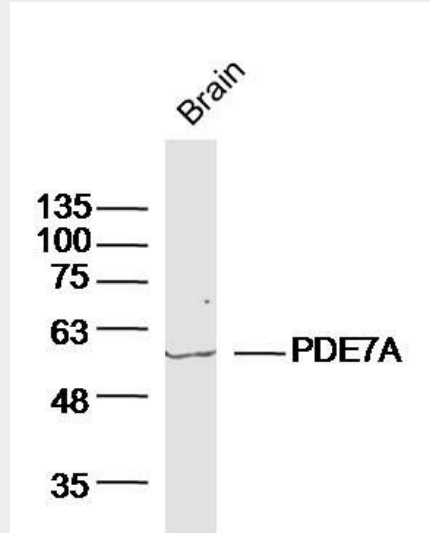
Primary Antibody:Rabbit Anti- PDE7A antibody(bs-11575R), Dilution: 1 μ g in 100 μ L 1X PBS containing 0.5% BSA;

Isotype Control Antibody: Rabbit IgG(orange) ,used under the same conditions);

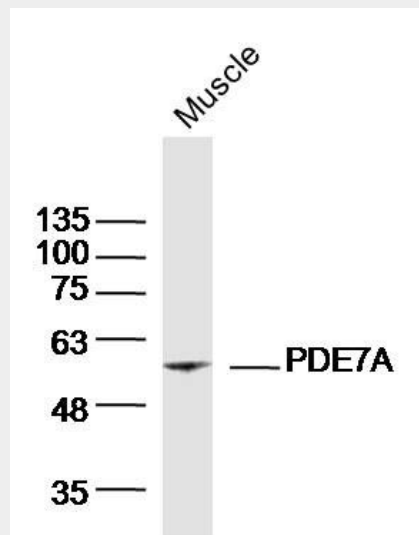
Secondary Antibody: Goat anti-rabbit IgG-PE(white blue), Dilution: 1:200 in 1 X PBS containing 0.5% BSA.



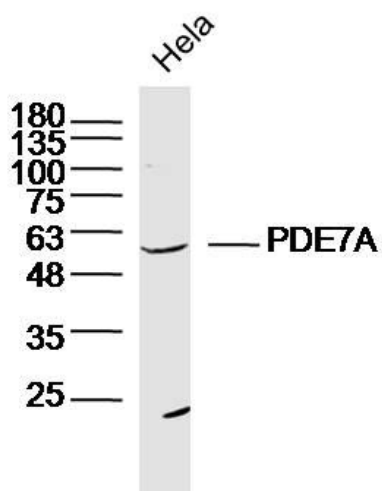
Paraformaldehyde-fixed, paraffin embedded (rat heart); Antigen retrieval by boiling in sodium citrate buffer (pH6.0) for 15min; Block endogenous peroxidase by 3% hydrogen peroxide for 20 minutes; Blocking buffer (normal goat serum) at 37°C for 30min; Antibody incubation with (PDE7A) Polyclonal Antibody, Unconjugated (bs-11575R) at 1:500 overnight at 4°C, followed by a conjugated secondary (sp-0023) for 20 minutes and DAB staining.



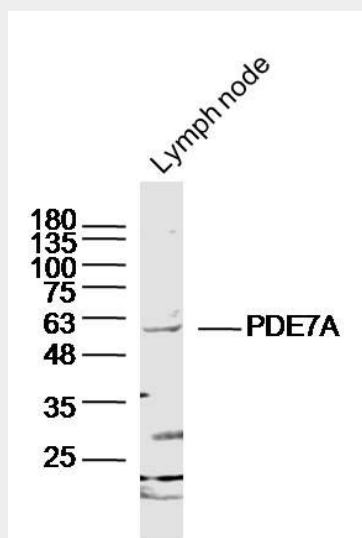
Sample: Brain (Mouse) Lysate at 40 ug
Primary: Anti-PDE7A(bs-11575R) at 1/300 dilution
Secondary: IRDye800CW Goat Anti-Rabbit IgG at 1/20000 dilution
Predicted band size: 55kD
Observed band size: 55kD



Sample: Muscle (Mouse) Lysate at 40 ug
Primary: Anti-PDE7A(bs-11575R) at 1/300 dilution
Secondary: IRDye800CW Goat Anti-Rabbit IgG at 1/20000 dilution
Predicted band size: 55kD
Observed band size: 55kD



Sample: HeLa Cell (Human) Lysate at 30 ug
Primary: Anti-PDE7A (bs-11575R) at 1/300 dilution
Secondary: IRDye800CW Goat Anti-Rabbit IgG at 1/20000 dilution
Predicted band size: 55kD
Observed band size: 55kD



Sample: Lymph node (Mouse) Lysate at 40 ug
Primary: Anti-PDE7A (bs-11575R) at 1/300 dilution
Secondary: IRDye800CW Goat Anti-Rabbit IgG at 1/20000 dilution
Predicted band size: 55kD
Observed band size: 55kD