

**KIBRA Polyclonal Antibody**  
**Purified Rabbit Polyclonal Antibody (Pab)**  
**Catalog # AP54550****Specification**

---

**KIBRA Polyclonal Antibody - Product Information**

Application	<b>WB, IHC-P</b>
Primary Accession	<a href="#">O8IX03</a>
Reactivity	<b>Rat, Dog, Bovine</b>
Host	<b>Rabbit</b>
Clonality	<b>Polyclonal</b>
Calculated MW	<b>125301</b>

**KIBRA Polyclonal Antibody - Additional Information****Gene ID** 23286**Other Names**

Protein KIBRA, HBeAg-binding protein 3, Kidney and brain protein, KIBRA, WW domain-containing protein 1, WWC1, KIAA0869

**Format**

0.01M TBS(pH7.4), 0.09% (W/V) sodium azide and 50% Glyce

**Storage**

Store at -20 °C for one year. Avoid repeated freeze/thaw cycles. When reconstituted in sterile pH 7.4 0.01M PBS or diluent of antibody the antibody is stable for at least two weeks at 2-4 °C.

**KIBRA Polyclonal Antibody - Protein Information****Name** WWC1 ([HGNC:29435](#))**Synonyms** KIAA0869, KIBRA**Function**

Regulator of the Hippo signaling pathway, also known as the Salvador-Warts-Hippo (SWH) pathway (PubMed:<a href="http://www.uniprot.org/citations/24682284" target="\_blank">24682284</a>). Enhances phosphorylation of LATS1 and YAP1 and negatively regulates cell proliferation and organ growth due to a suppression of the transcriptional activity of YAP1, the major effector of the Hippo pathway (PubMed:<a href="http://www.uniprot.org/citations/24682284" target="\_blank">24682284</a>). Along with NF2 can synergistically induce the phosphorylation of LATS1 and LATS2 and function in the regulation of Hippo signaling pathway (PubMed:<a href="http://www.uniprot.org/citations/20159598" target="\_blank">20159598</a>). Acts as a transcriptional coactivator of ESR1 which plays an essential role in DYNLL1-mediated ESR1 transactivation (PubMed:<a href="http://www.uniprot.org/citations/16684779" target="\_blank">16684779</a>). Regulates collagen-stimulated activation of the ERK/MAPK cascade (PubMed:<a href="http://www.uniprot.org/citations/18190796" target="\_blank">18190796</a>). Modulates directional migration of podocytes (PubMed:<a href="http://www.uniprot.org/citations/18190796" target="\_blank">18190796</a>).

[18596123](http://www.uniprot.org/citations/18596123)). Plays a role in cognition and memory performance (PubMed:[18672031](http://www.uniprot.org/citations/18672031)). Plays an important role in regulating AMPA-selective glutamate receptors (AMPA) trafficking underlying synaptic plasticity and learning (By similarity).

#### Cellular Location

Cytoplasm, perinuclear region. Nucleus. Cell projection, ruffle membrane. Cytoplasm, cytosol.  
Note=Colocalizes with PRKCZ in the perinuclear region

#### Tissue Location

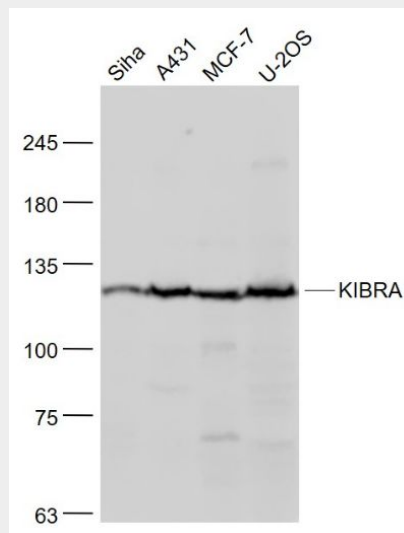
Expressed in mammary epithelial cells and breast cancer cell lines. Found in the luminal epithelium surrounding the ducts in the normal breast. In the brain, expressed in somatodendritic compartment of neurons in the cortex and hippocampus and in the cerebellum it is found in the Purkinje cells and some granule cells (at protein level). Detected in brain, heart, colon and kidney. In the kidney, expressed in glomerular podocytes, in some tubules and in the collecting duct.

### KIBRA Polyclonal Antibody - Protocols

Provided below are standard protocols that you may find useful for product applications.

- [Western Blot](#)
- [Blocking Peptides](#)
- [Dot Blot](#)
- [Immunohistochemistry](#)
- [Immunofluorescence](#)
- [Immunoprecipitation](#)
- [Flow Cytometry](#)
- [Cell Culture](#)

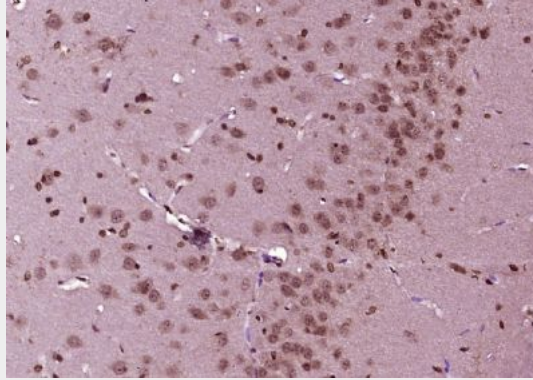
### KIBRA Polyclonal Antibody - Images



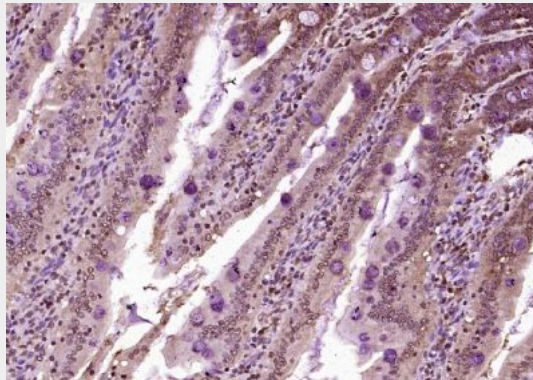
#### Sample:

Siha(Human) Cell Lysate at 30 ug  
A431(Human) Cell Lysate at 30 ug  
MCF-7(Human) Cell Lysate at 30 ug  
U-2OS(Human) Cell Lysate at 30 ug

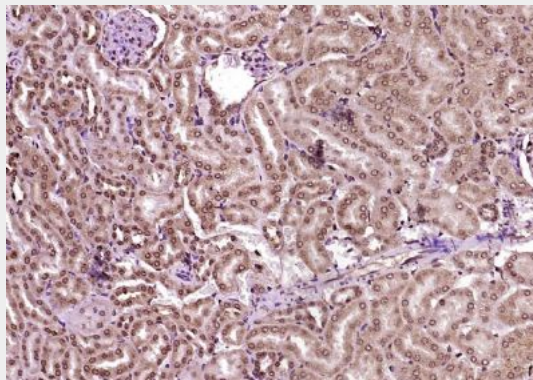
Primary: Anti- KIBRA (bs-11570R) at 1/1000 dilution  
Secondary: IRDye800CW Goat Anti-Rabbit IgG at 1/20000 dilution  
Predicted band size: 125 kD  
Observed band size:125 kD



Paraformaldehyde-fixed, paraffin embedded (Rat brain); Antigen retrieval by boiling in sodium citrate buffer (pH6.0) for 15min; Block endogenous peroxidase by 3% hydrogen peroxide for 20 minutes; Blocking buffer (normal goat serum) at 37°C for 30min; Antibody incubation with (KIBRA) Polyclonal Antibody, Unconjugated (bs-11570R) at 1:400 overnight at 4°C, followed by operating according to SP Kit(Rabbit) (sp-0023) instructions and DAB staining.



Paraformaldehyde-fixed, paraffin embedded (Rat small intestine); Antigen retrieval by boiling in sodium citrate buffer (pH6.0) for 15min; Block endogenous peroxidase by 3% hydrogen peroxide for 20 minutes; Blocking buffer (normal goat serum) at 37°C for 30min; Antibody incubation with (KIBRA) Polyclonal Antibody, Unconjugated (bs-11570R) at 1:400 overnight at 4°C, followed by operating according to SP Kit(Rabbit) (sp-0023) instructions and DAB staining.



Paraformaldehyde-fixed, paraffin embedded (Mouse kidney); Antigen retrieval by boiling in sodium citrate buffer (pH6.0) for 15min; Block endogenous peroxidase by 3% hydrogen peroxide

for 20 minutes; Blocking buffer (normal goat serum) at 37°C for 30min; Antibody incubation with (KIBRA) Polyclonal Antibody, Unconjugated (bs-11570R) at 1:400 overnight at 4°C, followed by operating according to SP Kit(Rabbit) (sp-0023) instructions and DAB staining.