

rSec6 Polyclonal Antibody
Purified Rabbit Polyclonal Antibody (Pab)
Catalog # AP54486

Specification

rSec6 Polyclonal Antibody - Product Information

Application	FC
Primary Accession	O60645
Reactivity	Rat, Dog, Bovine
Host	Rabbit
Clonality	Polyclonal
Calculated MW	85567

rSec6 Polyclonal Antibody - Additional Information

Gene ID 11336

Other Names

Exocyst complex component 3, Exocyst complex component Sec6, EXOC3, SEC6, SEC6L1

Format

0.01M TBS(pH7.4), 0.09% (W/V) sodium azide and 50% Glyce

Storage

Store at -20 °C for one year. Avoid repeated freeze/thaw cycles. When reconstituted in sterile pH 7.4 0.01M PBS or diluent of antibody the antibody is stable for at least two weeks at 2-4 °C.

rSec6 Polyclonal Antibody - Protein Information

Name EXOC3

Synonyms SEC6, SEC6L1

Function

Component of the exocyst complex involved in the docking of exocytic vesicles with fusion sites on the plasma membrane.

Cellular Location

Cytoplasm {ECO:0000250|UniProtKB:O54921}. Cytoplasm, perinuclear region {ECO:0000250|UniProtKB:O54921}. Cell projection, growth cone {ECO:0000250|UniProtKB:O54921}. Midbody. Golgi apparatus. Cell projection, neuron projection {ECO:0000250|UniProtKB:Q62825}. Note=Perinuclear in undifferentiated cells. Redistributes to growing neurites and growth cones during neuronal differentiation (By similarity). During mitosis, early recruitment to the midbody requires RALA, but not RALB, and EXOC2. In late stages of cytokinesis, localization to the midbody is RALB- dependent (PubMed:18756269). {ECO:0000250|UniProtKB:O54921, ECO:0000269|PubMed:18756269}

Tissue Location

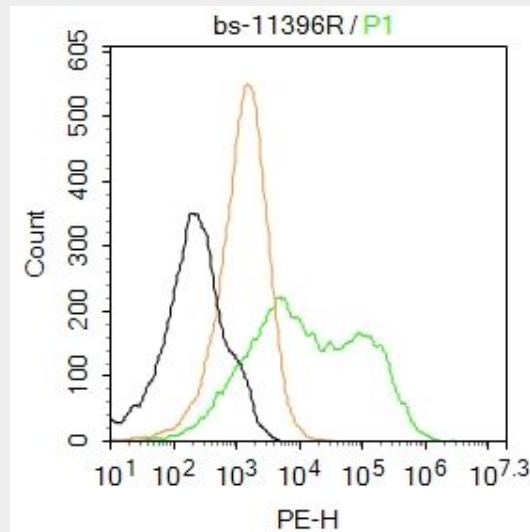
Expressed in epididymis (at protein level).

rSec6 Polyclonal Antibody - Protocols

Provided below are standard protocols that you may find useful for product applications.

- [Western Blot](#)
- [Blocking Peptides](#)
- [Dot Blot](#)
- [Immunohistochemistry](#)
- [Immunofluorescence](#)
- [Immunoprecipitation](#)
- [Flow Cytometry](#)
- [Cell Culture](#)

rSec6 Polyclonal Antibody - Images



Blank control:Hela.

Primary Antibody (green line): Rabbit Anti-rSec6 antibody (bs-11396R)

Dilution: 2 μg / 10^6 cells;

Isotype Control Antibody (orange line): Rabbit IgG .

Secondary Antibody : Goat anti-rabbit IgG-PE

Dilution: 1 μg /test.

Protocol

The cells were incubated in 5%BSA to block non-specific protein-protein interactions for 30 min at room temperature .Cells stained with Primary Antibody for 30 min at room temperature. The secondary antibody used for 40 min at room temperature. Acquisition of 20,000 events was performed.