

**WFS1 Polyclonal Antibody**  
**Purified Rabbit Polyclonal Antibody (Pab)**  
**Catalog # AP54440**

**Specification**

---

**WFS1 Polyclonal Antibody - Product Information**

Application	WB
Primary Accession	<a href="#">O76024</a>
Reactivity	Rat, Dog, Bovine
Host	Rabbit
Clonality	Polyclonal
Calculated MW	100292

**WFS1 Polyclonal Antibody - Additional Information**

**Gene ID** 7466

**Other Names**

Wolframin, WFS1

**Format**

0.01M TBS(pH7.4), 0.09% (W/V) sodium azide and 50% Glyce

**Storage**

Store at -20 °C for one year. Avoid repeated freeze/thaw cycles. When reconstituted in sterile pH 7.4 0.01M PBS or diluent of antibody the antibody is stable for at least two weeks at 2-4 °C.

**WFS1 Polyclonal Antibody - Protein Information**

**Name** WFS1

**Function**

Participates in the regulation of cellular Ca(2+) homeostasis, at least partly, by modulating the filling state of the endoplasmic reticulum Ca(2+) store (PubMed:<a href="http://www.uniprot.org/citations/16989814" target="\_blank">16989814</a>). Negatively regulates the ER stress response and positively regulates the stability of V-ATPase subunits ATP6V1A and ATP1B1 by preventing their degradation through an unknown proteasome-independent mechanism (PubMed:<a href="http://www.uniprot.org/citations/23035048" target="\_blank">23035048</a>).

**Cellular Location**

Endoplasmic reticulum membrane; Multi-pass membrane protein. Cytoplasmic vesicle, secretory vesicle. Note=Co-localizes with ATP6V1A in the secretory granules in neuroblastoma cell lines

**Tissue Location**

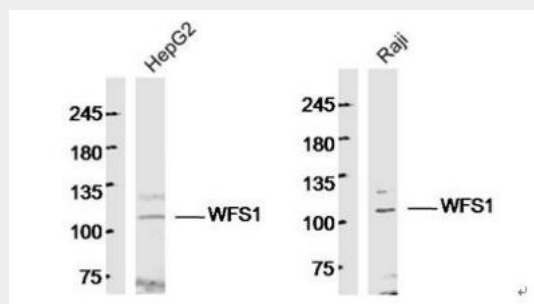
Highly expressed in heart followed by brain, placenta, lung and pancreas. Weakly expressed in liver, kidney and skeletal muscle. Also expressed in islet and beta-cell insulinoma cell line

## WFS1 Polyclonal Antibody - Protocols

Provided below are standard protocols that you may find useful for product applications.

- [Western Blot](#)
- [Blocking Peptides](#)
- [Dot Blot](#)
- [Immunohistochemistry](#)
- [Immunofluorescence](#)
- [Immunoprecipitation](#)
- [Flow Cytometry](#)
- [Cell Culture](#)

## WFS1 Polyclonal Antibody - Images



### Sample:

HepG2 Cell □Human□Lysate at 40 ug

Raji Cell □Human□Lysate at 40 ug

Primary: Anti-WFS1 (bs-11272R) at 1/300 dilution

Secondary: IRDye800CW Goat Anti-Rabbit IgG at 1/20000 dilution

Predicted band size: 97 kD

Observed band size: 105 kD