

NIPAL3 Polyclonal Antibody
Purified Rabbit Polyclonal Antibody (Pab)
Catalog # AP54371

Specification

NIPAL3 Polyclonal Antibody - Product Information

Application	WB
Primary Accession	Q6P499
Reactivity	Rat, Pig, Bovine
Host	Rabbit
Clonality	Polyclonal
Calculated MW	44742

NIPAL3 Polyclonal Antibody - Additional Information

Gene ID 57185

Other Names

NIPA-like protein 3, NIPAL3, NPAL3

Format

0.01M TBS(pH7.4), 0.09% (W/V) sodium azide and 50% Glyce

Storage

Store at -20 °C for one year. Avoid repeated freeze/thaw cycles. When reconstituted in sterile pH 7.4 0.01M PBS or diluent of antibody the antibody is stable for at least two weeks at 2-4 °C.

NIPAL3 Polyclonal Antibody - Protein Information

Name NIPAL3

Synonyms NPAL3

Cellular Location

Membrane; Multi-pass membrane protein

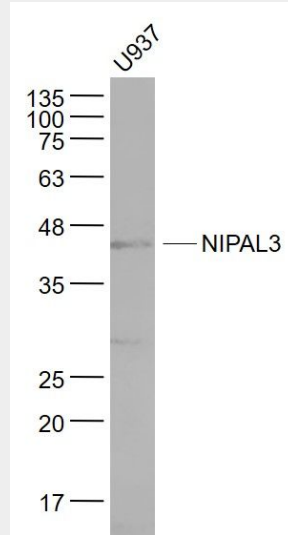
NIPAL3 Polyclonal Antibody - Protocols

Provided below are standard protocols that you may find useful for product applications.

- [Western Blot](#)
- [Blocking Peptides](#)
- [Dot Blot](#)
- [Immunohistochemistry](#)
- [Immunofluorescence](#)
- [Immunoprecipitation](#)

- [Flow Cytometry](#)
- [Cell Culture](#)

NIPAL3 Polyclonal Antibody - Images



Sample:

U937(Human) Cell Lysate at 30 ug

Primary: Anti- NIPAL3 (bs-11097R) at 1/1000 dilution

Secondary: IRDye800CW Goat Anti-Rabbit IgG at 1/20000 dilution

Predicted band size: 45 kD

Observed band size: 45 kD