

**KIF5A/NKHC1 Polyclonal Antibody**  
**Purified Rabbit Polyclonal Antibody (Pab)**  
**Catalog # AP54347**

**Specification**

---

**KIF5A/NKHC1 Polyclonal Antibody - Product Information**

Application	IHC-P
Primary Accession	<a href="#">Q12840</a>
Reactivity	Rat, Pig, Dog, Bovine
Host	Rabbit
Clonality	Polyclonal
Calculated MW	117378

**KIF5A/NKHC1 Polyclonal Antibody - Additional Information**

**Gene ID** 3798

**Other Names**

Kinesin heavy chain isoform 5A, Kinesin heavy chain neuron-specific 1, Neuronal kinesin heavy chain, NKHC, KIF5A, NKHC1

**Format**

0.01M TBS(pH7.4), 0.09% (W/V) sodium azide and 50% Glyce

**Storage**

Store at -20 °C for one year. Avoid repeated freeze/thaw cycles. When reconstituted in sterile pH 7.4 0.01M PBS or diluent of antibody the antibody is stable for at least two weeks at 2-4 °C.

**KIF5A/NKHC1 Polyclonal Antibody - Protein Information**

**Name** KIF5A

**Synonyms** NKHC1

**Function**

Microtubule-dependent motor required for slow axonal transport of neurofilament proteins (NFH, NFM and NFL). Can induce formation of neurite-like membrane protrusions in non-neuronal cells in a ZFYVE27-dependent manner. The ZFYVE27-KIF5A complex contributes to the vesicular transport of VAPA, VAPB, SURF4, RAB11A, RAB11B and RTN3 proteins in neurons. Required for anterograde axonal transportation of MAPK8IP3/JIP3 which is essential for MAPK8IP3/JIP3 function in axon elongation.

**Cellular Location**

Cytoplasm, perinuclear region {ECO:0000250|UniProtKB:Q6QLM7}. Cytoplasm, cytoskeleton {ECO:0000250|UniProtKB:Q6QLM7}. Perikaryon {ECO:0000250|UniProtKB:Q6QLM7}.  
Note=Concentrated in the cell body of the neurons, particularly in the perinuclear region {ECO:0000250|UniProtKB:Q6QLM7}

### Tissue Location

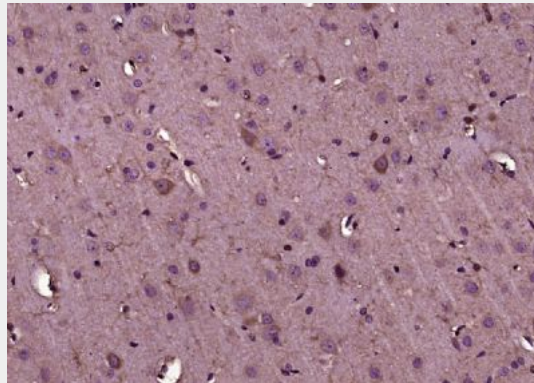
Distributed throughout the CNS but is highly enriched in subsets of neurons

### KIF5A/NKHC1 Polyclonal Antibody - Protocols

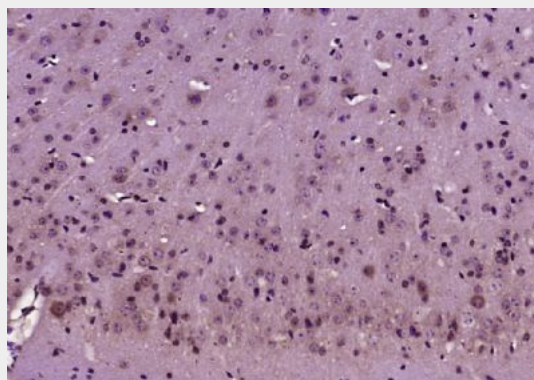
Provided below are standard protocols that you may find useful for product applications.

- [Western Blot](#)
- [Blocking Peptides](#)
- [Dot Blot](#)
- [Immunohistochemistry](#)
- [Immunofluorescence](#)
- [Immunoprecipitation](#)
- [Flow Cytometry](#)
- [Cell Culture](#)

### KIF5A/NKHC1 Polyclonal Antibody - Images



Paraformaldehyde-fixed, paraffin embedded (Rat brain); Antigen retrieval by boiling in sodium citrate buffer (pH6.0) for 15min; Block endogenous peroxidase by 3% hydrogen peroxide for 20 minutes; Blocking buffer (normal goat serum) at 37°C for 30min; Antibody incubation with (KIF5A/NKHC1) Polyclonal Antibody, Unconjugated (bs-11027R) at 1:400 overnight at 4°C, followed by operating according to SP Kit(Rabbit) (sp-0023) instructions and DAB staining.



Paraformaldehyde-fixed, paraffin embedded (Mouse brain); Antigen retrieval by boiling in sodium citrate buffer (pH6.0) for 15min; Block endogenous peroxidase by 3% hydrogen peroxide for 20 minutes; Blocking buffer (normal goat serum) at 37°C for 30min; Antibody incubation with (KIF5A/NKHC1) Polyclonal Antibody, Unconjugated (bs-11027R) at 1:400 overnight at 4°C, followed by operating according to SP Kit(Rabbit) (sp-0023) instructions and DAB staining.