

**DEPDC1 Antibody (N-term)**  
**Affinity Purified Rabbit Polyclonal Antibody (Pab)**  
**Catalog # AP5428a**

**Specification**

---

**DEPDC1 Antibody (N-term) - Product Information**

Application	WB, IHC-P,E
Primary Accession	<a href="#">Q5TB30</a>
Other Accession	<a href="#">NP_001107592.1</a> , <a href="#">NP_060249.2</a>
Reactivity	Human
Host	Rabbit
Clonality	Polyclonal
Isotype	Rabbit IgG
Antigen Region	10-38

**DEPDC1 Antibody (N-term) - Additional Information**

**Gene ID** 55635

**Other Names**

DEP domain-containing protein 1A, DEPDC1, DEPDC1A

**Target/Specificity**

This DEPDC1 antibody is generated from rabbits immunized with a KLH conjugated synthetic peptide between 10-38 amino acids from the N-terminal region of human DEPDC1.

**Dilution**

WB~~1:1000  
IHC-P~~1:50~100

**Format**

Purified polyclonal antibody supplied in PBS with 0.09% (W/V) sodium azide. This antibody is purified through a protein A column, followed by peptide affinity purification.

**Storage**

Maintain refrigerated at 2-8°C for up to 2 weeks. For long term storage store at -20°C in small aliquots to prevent freeze-thaw cycles.

**Precautions**

DEPDC1 Antibody (N-term) is for research use only and not for use in diagnostic or therapeutic procedures.

**DEPDC1 Antibody (N-term) - Protein Information**

**Name** DEPDC1

**Synonyms** DEPDC1A

**Function** May be involved in transcriptional regulation as a transcriptional corepressor. The DEPDC1A-ZNF224 complex may play a critical role in bladder carcinogenesis by repressing the transcription of the A20 gene, leading to transport of NF-KB protein into the nucleus, resulting in suppression of apoptosis of bladder cancer cells.

**Cellular Location**

Nucleus. Note=Colocalizes with ZNF224 at the nucleus

**Tissue Location**

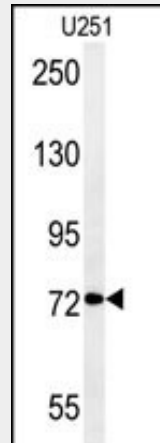
Expressed in testis. Up-regulated in bladder cancer cells (at protein level).

**DEPDC1 Antibody (N-term) - Protocols**

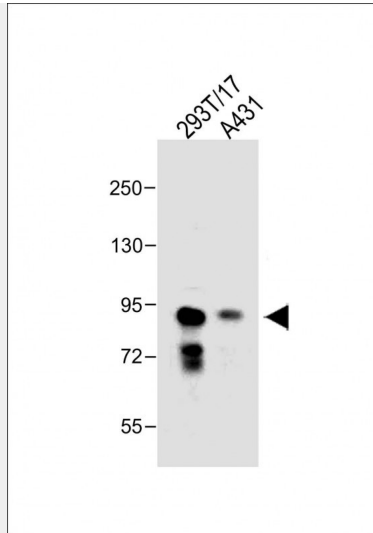
Provided below are standard protocols that you may find useful for product applications.

- [Western Blot](#)
- [Blocking Peptides](#)
- [Dot Blot](#)
- [Immunohistochemistry](#)
- [Immunofluorescence](#)
- [Immunoprecipitation](#)
- [Flow Cytometry](#)
- [Cell Culture](#)

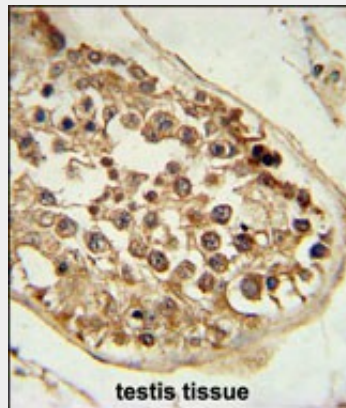
**DEPDC1 Antibody (N-term) - Images**



DEPDC1 Antibody (N-term)(Cat. #AP5428a) western blot analysis in U251 cell line lysates (35ug/lane).This demonstrates the DEPDC1 antibody detected the DEPDC1 protein (arrow).



All lanes : Anti-DEPDC1 Antibody (N-term) at 1:1000 dilution Lane 1: 293T/17 whole cell lysate  
Lane 2: A431 whole cell lysate Lysates/proteins at 30 µg per lane. Secondary Goat Anti-Rabbit  
IgG, (H+L), Peroxidase conjugated at 1/10000 dilution. Predicted band size : 93kDa  
Blocking/Dilution buffer: 5% NFDM/TBST.



DEPDC1 Antibody (N-term) (Cat. #AP5428a) immunohistochemistry analysis in formalin fixed and paraffin embedded human testis tissue followed by peroxidase conjugation of the secondary antibody and DAB staining. This data demonstrates the use of the DEPDC1 Antibody (N-term) for immunohistochemistry. Clinical relevance has not been evaluated.

#### **DEPDC1 Antibody (N-term) - References**

Kanehira, M., et al. Oncogene 26(44):6448-6455(2007)

#### **DEPDC1 Antibody (N-term) - Citations**

- [DEPDC1 up-regulates RAS expression to inhibit autophagy in lung adenocarcinoma cells](#)