

**Serine racemase Polyclonal Antibody**  
**Purified Rabbit Polyclonal Antibody (Pab)**  
**Catalog # AP54272**

**Specification**

---

**Serine racemase Polyclonal Antibody - Product Information**

Application	<b>WB, IHC-P</b>
Primary Accession	<a href="#">O9GZT4</a>
Reactivity	<b>Rat, Dog, Bovine</b>
Host	<b>Rabbit</b>
Clonality	<b>Polyclonal</b>
Calculated MW	<b>36566</b>

**Serine racemase Polyclonal Antibody - Additional Information**

**Gene ID** 63826

**Other Names**

Serine racemase, 5.1.1.18, D-serine ammonia-lyase, D-serine dehydratase, 4.3.1.18, SRR

**Format**

0.01M TBS(pH7.4), 0.09% (W/V) sodium azide and 50% Glyce

**Storage**

Store at -20 °C for one year. Avoid repeated freeze/thaw cycles. When reconstituted in sterile pH 7.4 0.01M PBS or diluent of antibody the antibody is stable for at least two weeks at 2-4 °C.

**Serine racemase Polyclonal Antibody - Protein Information**

**Name** SRR

**Function**

Catalyzes the synthesis of D-serine from L-serine (PubMed:<a href="http://www.uniprot.org/citations/20106978" target="\_blank">20106978</a>, PubMed:<a href="http://www.uniprot.org/citations/23391306" target="\_blank">23391306</a>, PubMed:<a href="http://www.uniprot.org/citations/29277459" target="\_blank">29277459</a>). D-serine is a key coagonist with glutamate at NMDA receptors. Has dehydratase activity towards both L-serine and D-serine (By similarity).

**Tissue Location**

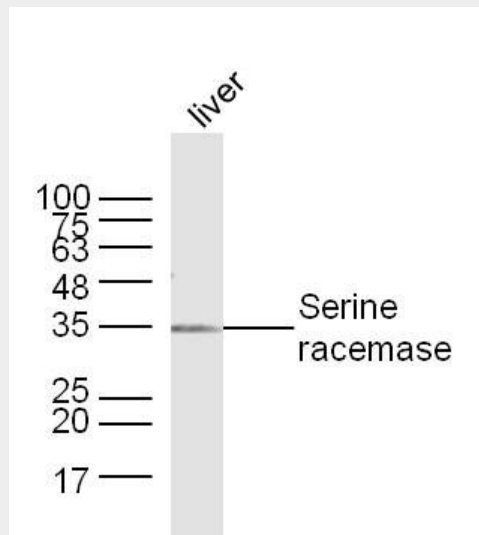
Expressed in the cerebellum, hippocampus, dorsolateral prefrontal cortex, and in motor neurons and glial cells of the lumbar spinal cord (at protein level) (PubMed:17880399, PubMed:24138986). Increased in the dorsolateral prefrontal cortex of schizophrenic patients (at protein level) (PubMed:17880399). Brain: expressed at high levels in hippocampus and corpus callosum, intermediate levels in substantia nigra and caudate, and low levels in amygdala, thalamus, and subthalamic nuclei (PubMed:15193426). Expressed in heart, skeletal muscle, kidney, and liver (PubMed:15193426)

## Serine racemase Polyclonal Antibody - Protocols

Provided below are standard protocols that you may find useful for product applications.

- [Western Blot](#)
- [Blocking Peptides](#)
- [Dot Blot](#)
- [Immunohistochemistry](#)
- [Immunofluorescence](#)
- [Immunoprecipitation](#)
- [Flow Cytometry](#)
- [Cell Culture](#)

## Serine racemase Polyclonal Antibody - Images



**Sample:**

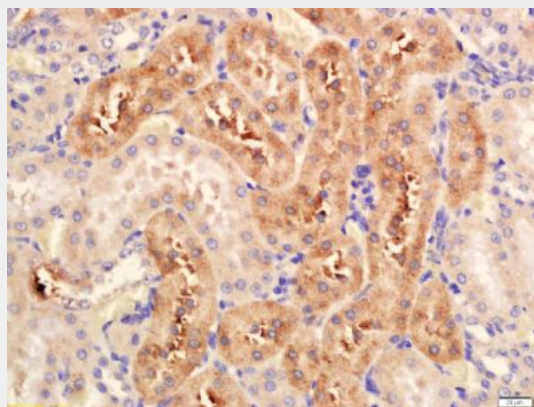
Liver (Mouse) Lysate at 40 ug

Primary: Anti- Serine racemase (bs-10474R) at 1/300 dilution

Secondary: IRDye800CW Goat Anti-Rabbit IgG at 1/20000 dilution

Predicted band size: 37 kD

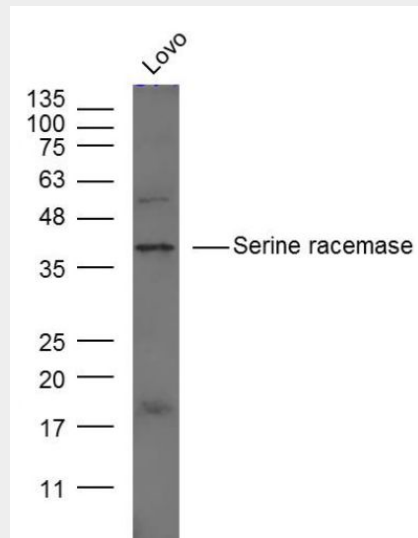
Observed band size: 37 kD



Tissue/cell: rat kidney tissue; 4% Paraformaldehyde-fixed and paraffin-embedded;

Antigen retrieval: citrate buffer ( 0.01M, pH 6.0 ), Boiling bathing for 15min; Block endogenous peroxidase by 3% Hydrogen peroxide for 30min; Blocking buffer (normal goat serum,C-0005) at 37°C for 20 min;

Incubation:Anti-Serine racemase Polyclonal Antibody, Unconjugated(bs-10474R) 1:200, overnight at 4°C, followed by conjugation to the secondary antibody(SP-0023) and DAB(C-0010) staining



Sample: lovo (human)cell Lysate at 40 ug  
Primary: Anti- Serine racemase (bs-10474R) at 1/300 dilution  
Secondary: IRDye800CW Goat Anti-Rabbit IgG at 1/20000 dilution  
Predicted band size: 37 kD  
Observed band size: 37 kD