

Sulfite oxidase Polyclonal Antibody
Purified Rabbit Polyclonal Antibody (Pab)
Catalog # AP54260

Specification

Sulfite oxidase Polyclonal Antibody - Product Information

Application	IHC-P
Primary Accession	P51687
Reactivity	Rat, Dog
Host	Rabbit
Clonality	Polyclonal
Calculated MW	60283

Sulfite oxidase Polyclonal Antibody - Additional Information

Gene ID 6821

Other Names

Sulfite oxidase, mitochondrial, 1.8.3.1, SUOX

Format

0.01M TBS(pH7.4), 0.09% (W/V) sodium azide and 50% Glyce

Storage

Store at -20 °C for one year. Avoid repeated freeze/thaw cycles. When reconstituted in sterile pH 7.4 0.01M PBS or diluent of antibody the antibody is stable for at least two weeks at 2-4 °C.

Sulfite oxidase Polyclonal Antibody - Protein Information

Name SUOX

Function

Catalyzes the oxidation of sulfite to sulfate, the terminal reaction in the oxidative degradation of sulfur-containing amino acids.

Cellular Location

Mitochondrion intermembrane space {ECO:0000250|UniProtKB:Q07116}

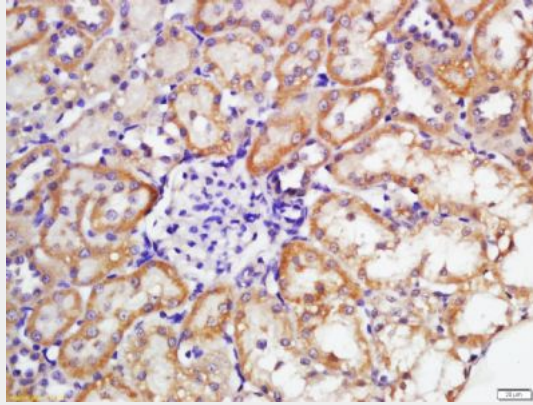
Sulfite oxidase Polyclonal Antibody - Protocols

Provided below are standard protocols that you may find useful for product applications.

- [Western Blot](#)
- [Blocking Peptides](#)
- [Dot Blot](#)
- [Immunohistochemistry](#)

- [Immunofluorescence](#)
- [Immunoprecipitation](#)
- [Flow Cytometry](#)
- [Cell Culture](#)

Sulfite oxidase Polyclonal Antibody - Images



Tissue/cell: rat kidney tissue; 4% Paraformaldehyde-fixed and paraffin-embedded;

Antigen retrieval: citrate buffer (0.01M, pH 6.0), Boiling bathing for 15min; Block endogenous peroxidase by 3% Hydrogen peroxide for 30min; Blocking buffer (normal goat serum,C-0005) at 37°C for 20 min;

Incubation: Anti-Sulfite oxidase Polyclonal Antibody, Unconjugated(bs-10426R) 1:200, overnight at 4°C, followed by conjugation to the secondary antibody(SP-0023) and DAB(C-0010) staining