

**AMY2A Antibody (C-term)**  
**Affinity Purified Rabbit Polyclonal Antibody (Pab)**  
**Catalog # AP5415b****Specification**

---

**AMY2A Antibody (C-term) - Product Information**

Application	IF, WB,E
Primary Accession	<a href="#">P04746</a>
Other Accession	<a href="#">P00690</a> , <a href="#">P19961</a> , <a href="#">P04745</a> , <a href="#">NP_000690.1</a> , <a href="#">P0DTE7</a> , <a href="#">P0DTE8</a> , <a href="#">P0DUB6</a>
Reactivity	Human, Mouse
Predicted	Pig
Host	Rabbit
Clonality	Polyclonal
Isotype	Rabbit IgG
Calculated MW	57707
Antigen Region	484-511

**AMY2A Antibody (C-term) - Additional Information****Gene ID** 279**Other Names**

Pancreatic alpha-amylase, PA, 4-alpha-D-glucan glucohydrolase, AMY2A

**Target/Specificity**

This AMY2A antibody is generated from rabbits immunized with a KLH conjugated synthetic peptide between 484-511 amino acids from the C-terminal region of human AMY2A.

**Dilution**

IF~~1:10~50

WB~~1:1000

**Format**

Purified polyclonal antibody supplied in PBS with 0.09% (W/V) sodium azide. This antibody is purified through a protein A column, followed by peptide affinity purification.

**Storage**

Maintain refrigerated at 2-8°C for up to 2 weeks. For long term storage store at -20°C in small aliquots to prevent freeze-thaw cycles.

**Precautions**

AMY2A Antibody (C-term) is for research use only and not for use in diagnostic or therapeutic procedures.

**AMY2A Antibody (C-term) - Protein Information****Name** AMY2A

#### Cellular Location

Secreted, extracellular space.

#### Tissue Location

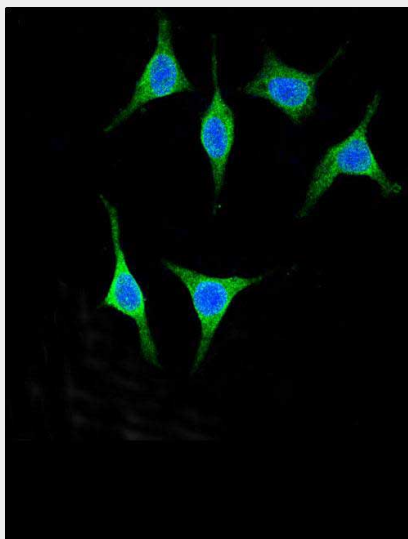
Detected in pancreas (at protein level).

#### AMY2A Antibody (C-term) - Protocols

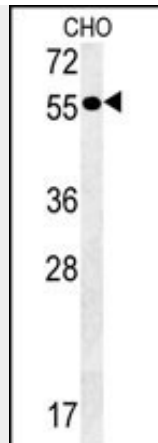
Provided below are standard protocols that you may find useful for product applications.

- [Western Blot](#)
- [Blocking Peptides](#)
- [Dot Blot](#)
- [Immunohistochemistry](#)
- [Immunofluorescence](#)
- [Immunoprecipitation](#)
- [Flow Cytometry](#)
- [Cell Culture](#)

#### AMY2A Antibody (C-term) - Images



Confocal immunofluorescent analysis of AMY2A Antibody (C-term)(Cat. #AP5415b) with 293 cell followed by Alexa Fluor® 488-conjugated goat anti-rabbit IgG (green). DAPI was used to stain the cell nuclear (blue).



AMY2A Antibody (C-term)(Cat. #AP5415b) western blot analysis in CHO cell line lysates (35ug/lane). This demonstrates the AMY2A antibody detected the AMY2A protein (arrow).

### **AMY2A Antibody (C-term) - Background**

Amylases are secreted proteins that hydrolyze 1,4-alpha-glucoside bonds in oligosaccharides and polysaccharides, and thus catalyze the first step in digestion of dietary starch and glycogen. The human genome has a cluster of several amylase genes that are expressed at high levels in either salivary gland or pancreas. This gene encodes an amylase isoenzyme produced by the pancreas.

### **AMY2A Antibody (C-term) - References**

- Endo, T., et al. Diabetes 58(3):732-737(2009)
- Baltova, S.D. Folia Med (Plovdiv) 47(1):37-41(2005)
- Scheil, H.G., et al. Anthropol Anz 62(4):429-434(2004)
- Numao, S., et al. J. Biol. Chem. 279(46):48282-48291(2004)
- Baltova, S., et al. Coll Antropol 28 SUPPL 2, 291-295 (2004) :
- Jacob, M., et al. Biochem. Cell Biol. 70 (10-11), 1105-1114 (1992) :
- Groot, P.C., et al. Genomics 8(1):97-105(1990)
- Horii, A., et al. Gene 60(1):57-64(1987)
- Nishide, T., et al. Gene 41 (2-3), 299-304 (1986) :
- Kaczmarek, M.J., et al. Clin. Chim. Acta 79(1):69-73(1977)