

**Anti-Mesothelin Antibody**  
Catalog # AP54148**Specification**

---

**Anti-Mesothelin Antibody - Product Information**

|                   |                        |
|-------------------|------------------------|
| Application       | IH, IF                 |
| Primary Accession | <a href="#">O13421</a> |
| Reactivity        | Human                  |
| Host              | Mouse                  |
| Clonality         | Monoclonal             |
| Calculated MW     | 68986                  |

**Anti-Mesothelin Antibody - Additional Information****Gene ID** 10232**Other Names**

MPF; Mesothelin; CAK1 antigen; Pre-pro-megakaryocyte-potentiating factor

**Target/Specificity**

Recognizes endogenous levels of Mesothelin protein.

**Dilution**

IH~~1/100 - 1/300

**Format**

Mouse IgG. Liquid in PBS containing 50% glycerol, 0.2% BSA and 0.09% (W/V) sodium azide.

**Storage**

Store at -20 °C. Stable for 12 months from date of receipt

**Anti-Mesothelin Antibody - Protein Information****Name** MSLN**Synonyms** MPF**Function**

Membrane-anchored forms may play a role in cellular adhesion.

**Cellular Location**

Cell membrane; Lipid-anchor, GPI-anchor. Golgi apparatus [Isoform 3]: Secreted.

**Tissue Location**

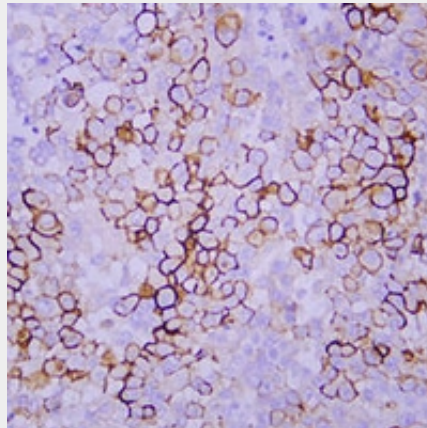
Expressed in lung. Expressed at low levels in heart, placenta and kidney. Expressed in mesothelial cells. Highly expressed in mesotheliomas, ovarian cancers, and some squamous cell carcinomas (at protein level).

## Anti-Mesothelin Antibody - Protocols

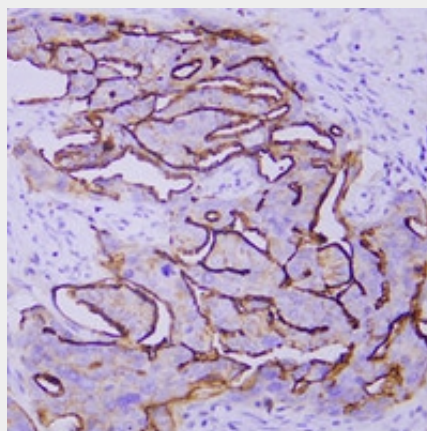
Provided below are standard protocols that you may find useful for product applications.

- [Western Blot](#)
- [Blocking Peptides](#)
- [Dot Blot](#)
- [Immunohistochemistry](#)
- [Immunofluorescence](#)
- [Immunoprecipitation](#)
- [Flow Cytometry](#)
- [Cell Culture](#)

## Anti-Mesothelin Antibody - Images



Immunohistochemical analysis of Mesothelin staining in human mesothelioma formalin fixed paraffin embedded tissue section. The section was pre-treated using heat mediated antigen retrieval with sodium citrate buffer (pH 6.0). The section was then incubated with the antibody at room temperature and detected using an HRP conjugated compact polymer system. DAB was used as the chromogen. The section was then counterstained with haematoxylin and mounted with DPX.



Immunohistochemical analysis of Mesothelin staining in human ovarian serous carcinoma formalin fixed paraffin embedded tissue section. The section was pre-treated using heat mediated antigen retrieval with sodium citrate buffer (pH 6.0). The section was then incubated with the antibody at room temperature and detected using an HRP conjugated compact polymer system.

DAB was used as the chromogen. The section was then counterstained with haematoxylin and mounted with DPX.

### **Anti-Mesothelin Antibody - Background**

Mouse monoclonal antibody to Mesothelin