

Anti-Mammaglobin-A/B Antibody
Catalog # AP54146

Specification

Anti-Mammaglobin-A/B Antibody - Product Information

Application	IHC
Primary Accession	O75556
Other Accession	Q13296
Reactivity	Human
Host	Mouse
Clonality	Monoclonal
Calculated MW	10884

Anti-Mammaglobin-A/B Antibody - Additional Information

Gene ID 4246

Other Names

LIPHC; MGB2; UGB3; Mammaglobin-B; Lacryglobin; Lipophilin-C; Mammaglobin-2; Secretoglobin family 2A member 1; MGB1; UGB2; Mammaglobin-A; Mammaglobin-1; Secretoglobin family 2A member 2

Target/Specificity

Recognizes endogenous levels of Mammaglobin-A/B protein.

Format

Mouse IgG2a. Liquid in PBS containing 50% glycerol, 0.2% BSA and 0.09% (W/V) sodium azide.

Storage

Store at -20 °C. Stable for 12 months from date of receipt

Anti-Mammaglobin-A/B Antibody - Protein Information

Name SCGB2A1

Synonyms LIPHC, MGB2, UGB3

Function

May bind androgens and other steroids, may also bind estramustine, a chemotherapeutic agent used for prostate cancer. May be under transcriptional regulation of steroid hormones.

Cellular Location

Secreted.

Tissue Location

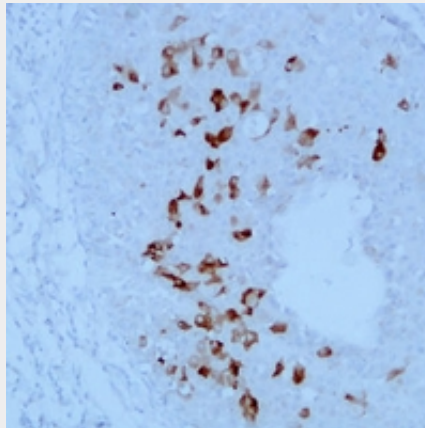
Expressed in thymus, trachea, kidney, steroid responsive tissues (prostate, testis, uterus, breast and ovary) and salivary gland

Anti-Mammaglobin-A/B Antibody - Protocols

Provided below are standard protocols that you may find useful for product applications.

- [Western Blot](#)
- [Blocking Peptides](#)
- [Dot Blot](#)
- [Immunohistochemistry](#)
- [Immunofluorescence](#)
- [Immunoprecipitation](#)
- [Flow Cytometry](#)
- [Cell Culture](#)

Anti-Mammaglobin-A/B Antibody - Images



Immunohistochemical analysis of Mammaglobin-A/B staining in human breast carcinoma formalin fixed paraffin embedded tissue section. The section was pre-treated using heat mediated antigen retrieval with sodium citrate buffer (pH 6.0). The section was then incubated with the antibody at room temperature and detected using an HRP conjugated compact polymer system. DAB was used as the chromogen. The section was then counterstained with haematoxylin and mounted with DPX.

Anti-Mammaglobin-A/B Antibody - Background

Mouse monoclonal antibody to Mammaglobin-A/B