

Anti-CG alpha Antibody
Catalog # AP54138**Specification**

Anti-CG alpha Antibody - Product Information

Application	IHC
Primary Accession	P01215
Reactivity	Human
Host	Mouse
Clonality	Monoclonal
Calculated MW	13075

Anti-CG alpha Antibody - Additional Information**Gene ID** 1081**Other Names**

Glycoprotein hormones alpha chain; Anterior pituitary glycoprotein hormones common subunit alpha; Choriogonadotropin alpha chain; Chorionic gonadotrophin subunit alpha; CG-alpha; Follicle-stimulating hormone alpha chain; FSH-alpha; Follitropin alpha chain; Luteinizing hormone alpha chain; LSH-alpha; Lutropin alpha chain; Thyroid-stimulating hormone alpha chain; TSH-alpha; Thyrotropin alpha chain

Target/Specificity

Recognizes endogenous levels of CG alpha protein.

Format

Mouse IgG. Liquid in PBS containing 50% glycerol, 0.2% BSA and 0.09% (W/V) sodium azide.

Storage

Store at -20 °C. Stable for 12 months from date of receipt

Anti-CG alpha Antibody - Protein Information**Name** CGA**Function**

Shared alpha chain of the active heterodimeric glycoprotein hormones thyrotropin/thyroid stimulating hormone/TSH, lutropin/luteinizing hormone/LH, follitropin/follicle stimulating hormone/FSH and choriogonadotropin/CG. These hormones bind specific receptors on target cells that in turn activate downstream signaling pathways.

Cellular Location

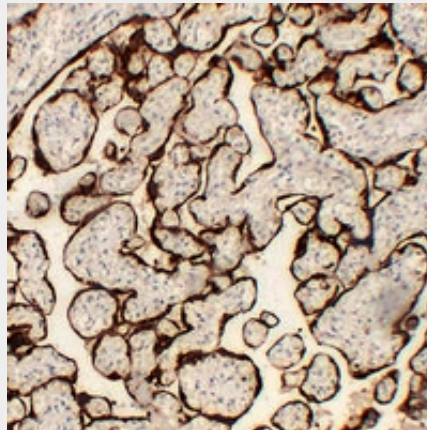
Secreted

Anti-CG alpha Antibody - Protocols

Provided below are standard protocols that you may find useful for product applications.

- [Western Blot](#)
- [Blocking Peptides](#)
- [Dot Blot](#)
- [Immunohistochemistry](#)
- [Immunofluorescence](#)
- [Immunoprecipitation](#)
- [Flow Cytometry](#)
- [Cell Culture](#)

Anti-CG alpha Antibody - Images



Immunohistochemical analysis of CG alpha staining in human placenta formalin fixed paraffin embedded tissue section. The section was pre-treated using heat mediated antigen retrieval with sodium citrate buffer (pH 6.0). The section was then incubated with the antibody at room temperature and detected using an HRP conjugated compact polymer system. DAB was used as the chromogen. The section was then counterstained with haematoxylin and mounted with DPX.

Anti-CG alpha Antibody - Background

Mouse monoclonal antibody to CG alpha