

Anti-BCL7A Antibody
Catalog # AP54107**Specification**

Anti-BCL7A Antibody - Product Information

Application	WB
Primary Accession	O4VC05
Reactivity	Human, Mouse, Rat
Host	Rabbit
Clonality	Polyclonal
Calculated MW	22810

Anti-BCL7A Antibody - Additional Information**Gene ID** 605**Other Names**

B-cell CLL/lymphoma 7 protein family member A

Target/Specificity

Recognizes endogenous levels of BCL7A protein.

Dilution

WB~~1/500 - 1/1000

Format

Liquid in 0.42% Potassium phosphate, 0.87% Sodium chloride, pH 7.3, 30% glycerol, and 0.09% (W/V) sodium azide.

Storage

Store at -20 °C. Stable for 12 months from date of receipt

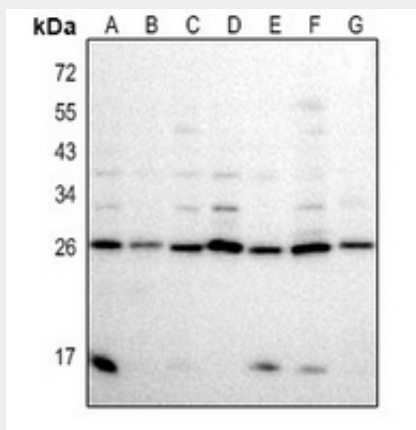
Anti-BCL7A Antibody - Protein Information**Name** BCL7A**Anti-BCL7A Antibody - Protocols**

Provided below are standard protocols that you may find useful for product applications.

- [Western Blot](#)
- [Blocking Peptides](#)
- [Dot Blot](#)
- [Immunohistochemistry](#)
- [Immunofluorescence](#)
- [Immunoprecipitation](#)

- [Flow Cytometry](#)
- [Cell Culture](#)

Anti-BCL7A Antibody - Images



Western blot analysis of BCL7A expression in rat ovary (A), mouse embryo (B), PC12 (C), CT26 (D), PC3 (E), A2780 (F), LOVO (G) whole cell lysates.

Anti-BCL7A Antibody - Background

Rabbit polyclonal antibody to BCL7A