

Anti-Laminin alpha 3 Antibody Catalog # AP54097

Specification

Anti-Laminin alpha 3 Antibody - Product Information

Application	WB, IF
Primary Accession	Q16787
Reactivity	Human, Mouse, Rat
Host	Rabbit
Clonality	Polyclonal
Calculated MW	366619

Anti-Laminin alpha 3 Antibody - Additional Information

Gene ID 3909

Other Names

LAMNA; Laminin subunit alpha-3; Epiligrin 170 kDa subunit; E170; Epiligrin subunit alpha; Kalinin subunit alpha; Laminin-5 subunit alpha; Laminin-6 subunit alpha; Laminin-7 subunit alpha; Nicein subunit alpha

Target/Specificity

Recognizes endogenous levels of Laminin alpha 3 protein.

Dilution

WB~~1/500 - 1/1000
IF~~1/50 - 1/200

Format

Liquid in 0.42% Potassium phosphate, 0.87% Sodium chloride, pH 7.3, 30% glycerol, and 0.09% (W/V) sodium azide.

Storage

Store at -20 °C. Stable for 12 months from date of receipt

Anti-Laminin alpha 3 Antibody - Protein Information

Name LAMA3

Synonyms LAMNA

Function

Binding to cells via a high affinity receptor, laminin is thought to mediate the attachment, migration and organization of cells into tissues during embryonic development by interacting with other extracellular matrix components.

Cellular Location

Secreted, extracellular space, extracellular matrix, basement membrane. Note=Major component

Tissue Location

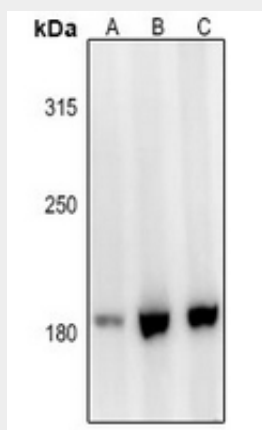
Skin; respiratory, urinary, and digestive epithelia and in other specialized tissues with prominent secretory or protective functions. Epithelial basement membrane, and epithelial cell tongue that migrates into a wound bed. A differential and focal expression of the subunit alpha-3 is observed in the CNS

Anti-Laminin alpha 3 Antibody - Protocols

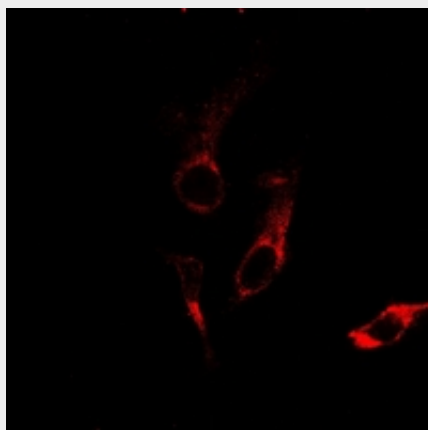
Provided below are standard protocols that you may find useful for product applications.

- [Western Blot](#)
- [Blocking Peptides](#)
- [Dot Blot](#)
- [Immunohistochemistry](#)
- [Immunofluorescence](#)
- [Immunoprecipitation](#)
- [Flow Cytometry](#)
- [Cell Culture](#)

Anti-Laminin alpha 3 Antibody - Images



Western blot analysis of Laminin alpha 3 expression in AML12 (A), HEK293T (B), SGC7901 (C) whole cell lysates.



Immunofluorescent analysis of Laminin alpha 3 staining in HepG2 cells. Formalin-fixed cells were permeabilized with 0.1% Triton X-100 in TBS for 5-10 minutes and blocked with 3% BSA-PBS for

30 minutes at room temperature. Cells were probed with the primary antibody in 3% BSA-PBS and incubated overnight at 4 °C in a humidified chamber. Cells were washed with PBST and incubated with a Alexa Fluor 594-conjugated secondary antibody (red) in PBS at room temperature in the dark.

Anti-Laminin alpha 3 Antibody - Background

Rabbit polyclonal antibody to Laminin alpha 3