

Anti-Actin-pan (AcK52/50/51) Antibody
Catalog # AP54090**Specification****Anti-Actin-pan (AcK52/50/51) Antibody - Product Information**

Application	WB
Primary Accession	P62736
Other Accession	P60709 , P68032 , P63261 , P63267 , P68133
Reactivity	Human, Mouse, Rat
Host	Rabbit
Clonality	Polyclonal
Calculated MW	42009

Anti-Actin-pan (AcK52/50/51) Antibody - Additional Information**Gene ID** 59**Other Names**

ACTA2; ACTSA; ACTVS; GIG46; Actin aortic smooth muscle; Alpha-actin-2; Cell growth-inhibiting gene 46 protein; ACTB; Actin cytoplasmic 1; Beta-actin; ACTC1; ACTC; Actin alpha cardiac muscle 1; Alpha-cardiac actin; ACTG1; ACTB; ACTG; Actin cytoplasmic 2; Gamma-actin; ACTG2; ACTA3; ACTL3; ACTSG; Actin gamma-enteric smooth muscle; Alpha-actin-3; Gamma-2-actin; Smooth muscle gamma-actin; ACTA1; ACTA; Actin alpha skeletal muscle; Alpha-actin-1

Target/Specificity

Recognizes endogenous levels of Actin-pan (AcK52/50/51) protein.

Dilution

WB~~1/500 - 1/1000

Format

Liquid in 0.42% Potassium phosphate, 0.87% Sodium chloride, pH 7.3, 30% glycerol, and 0.09% (W/V) sodium azide.

Storage

Store at -20 °C. Stable for 12 months from date of receipt

Anti-Actin-pan (AcK52/50/51) Antibody - Protein Information**Name** ACTA2**Synonyms** ACTSA, ACTVS**Function**

Actins are highly conserved proteins that are involved in various types of cell motility and are ubiquitously expressed in all eukaryotic cells.

Cellular Location

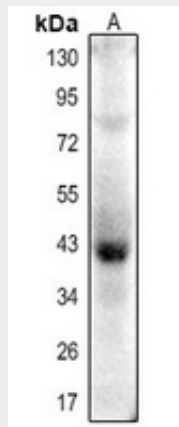
Cytoplasm, cytoskeleton.

Anti-Actin-pan (AcK52/50/51) Antibody - Protocols

Provided below are standard protocols that you may find useful for product applications.

- [Western Blot](#)
- [Blocking Peptides](#)
- [Dot Blot](#)
- [Immunohistochemistry](#)
- [Immunofluorescence](#)
- [Immunoprecipitation](#)
- [Flow Cytometry](#)
- [Cell Culture](#)

Anti-Actin-pan (AcK52/50/51) Antibody - Images



Western blot analysis of Actin-pan (AcK52/50/51) expression in mouse muscle (A) whole cell lysates.

Anti-Actin-pan (AcK52/50/51) Antibody - Background

Rabbit polyclonal antibody to Actin-pan (AcK52/50/51)