

Anti-RASGEF1A Antibody
Catalog # AP54077

Specification

Anti-RASGEF1A Antibody - Product Information

Application	WB
Primary Accession	Q8N9B8
Reactivity	Human
Host	Rabbit
Clonality	Polyclonal
Calculated MW	54556

Anti-RASGEF1A Antibody - Additional Information

Gene ID 221002

Other Names

Ras-GEF domain-containing family member 1A

Target/Specificity

Recognizes endogenous levels of RASGEF1A protein.

Dilution

WB~~1/500 - 1/1000

Format

Liquid in 0.42% Potassium phosphate, 0.87% Sodium chloride, pH 7.3, 30% glycerol, and 0.09% (W/V) sodium azide.

Storage

Store at -20 °C. Stable for 12 months from date of receipt

Anti-RASGEF1A Antibody - Protein Information

Name RASGEF1A

Function

Guanine nucleotide exchange factor (GEF) with specificity for RAP2A, KRAS, HRAS, and NRAS (in vitro). Plays a role in cell migration.

Tissue Location

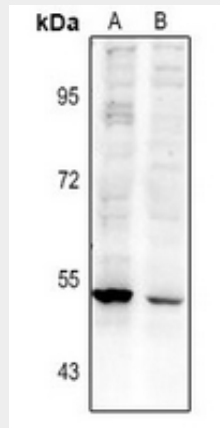
Detected in brain and spinal cord. Highly expressed in a number of intrahepatic cholangiocarcinoma tissue biopsies

Anti-RASGEF1A Antibody - Protocols

Provided below are standard protocols that you may find useful for product applications.

- [Western Blot](#)
- [Blocking Peptides](#)
- [Dot Blot](#)
- [Immunohistochemistry](#)
- [Immunofluorescence](#)
- [Immunoprecipitation](#)
- [Flow Cytometry](#)
- [Cell Culture](#)

Anti-RASGEF1A Antibody - Images



Western blot analysis of RASGEF1A expression in MCF7 (A), U87MG (B) whole cell lysates.

Anti-RASGEF1A Antibody - Background

Rabbit polyclonal antibody to RASGEF1A