

## Anti-Alpha-tubulin (pY272) Antibody Catalog # AP54060

### Specification

---

#### Anti-Alpha-tubulin (pY272) Antibody - Product Information

Application	WB
Primary Accession	<a href="#">Q71U36</a>
Other Accession	<a href="#">P68363</a> , <a href="#">Q9BOE3</a> , <a href="#">Q13748</a> , <a href="#">Q6PEY2</a> , <a href="#">P68366</a>
Reactivity	Human, Mouse, Rat
Host	Rabbit
Clonality	Polyclonal
Calculated MW	50136

#### Anti-Alpha-tubulin (pY272) Antibody - Additional Information

Gene ID 7846

#### Other Names

TUBA1A; TUBA3; Tubulin alpha-1A chain; Alpha-tubulin 3; Tubulin B-alpha-1; Tubulin alpha-3 chain; TUBA1B; Tubulin alpha-1B chain; Alpha-tubulin ubiquitous; Tubulin K-alpha-1; Tubulin alpha-ubiquitous chain; TUBA1C; TUBA6; Tubulin alpha-1C chain; Alpha-tubulin 6; Tubulin alpha-6 chain; TUBA3C; TUBA2; TUBA3D; Tubulin alpha-3C/D chain; Alpha-tubulin 2; Alpha-tubulin 3C/D; Tubulin alpha-2 chain; TUBA3E; Tubulin alpha-3E chain; Alpha-tubulin 3E; TUBA4A; TUBA1; Tubulin alpha-4A chain; Alpha-tubulin 1; Testis-specific alpha-tubulin; Tubulin H2-alpha; Tubulin alpha-1 chain

#### Target/Specificity

Recognizes endogenous levels of Alpha-tubulin (pY272) protein.

#### Dilution

WB~~1/500 - 1/1000

#### Format

Liquid in 0.42% Potassium phosphate, 0.87% Sodium chloride, pH 7.3, 30% glycerol, and 0.09% (W/V) sodium azide.

#### Storage

Store at -20 °C. Stable for 12 months from date of receipt

#### Anti-Alpha-tubulin (pY272) Antibody - Protein Information

Name TUBA1A

Synonyms TUBA3

#### Function

Tubulin is the major constituent of microtubules, a cylinder consisting of laterally associated linear protofilaments composed of alpha- and beta-tubulin heterodimers. Microtubules grow by the

addition of GTP-tubulin dimers to the microtubule end, where a stabilizing cap forms. Below the cap, tubulin dimers are in GDP-bound state, owing to GTPase activity of alpha-tubulin.

#### Cellular Location

Cytoplasm, cytoskeleton. Cytoplasm, cytoskeleton, flagellum axoneme  
{ECO:0000250|UniProtKB:P68369}

#### Tissue Location

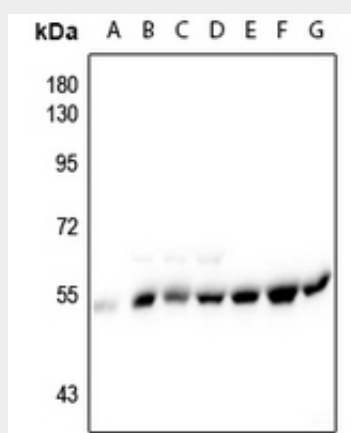
Expressed at a high level in fetal brain.

### Anti-Alpha-tubulin (pY272) Antibody - Protocols

Provided below are standard protocols that you may find useful for product applications.

- [Western Blot](#)
- [Blocking Peptides](#)
- [Dot Blot](#)
- [Immunohistochemistry](#)
- [Immunofluorescence](#)
- [Immunoprecipitation](#)
- [Flow Cytometry](#)
- [Cell Culture](#)

### Anti-Alpha-tubulin (pY272) Antibody - Images



Western blot analysis of Alpha-tubulin (pY272) expression in U87MG (A), A375 (B), Hela (C), A2780 (D), EC9706 (E), C6 (F), CT26 (G) whole cell lysates.

### Anti-Alpha-tubulin (pY272) Antibody - Background

Rabbit polyclonal antibody to Alpha-tubulin (pY272)