

**Anti-NAV2 Antibody**  
Catalog # AP54044

**Specification**

---

**Anti-NAV2 Antibody - Product Information**

Application	<b>WB</b>
Primary Accession	<a href="#">Q8IVL1</a>
Reactivity	<b>Human, Mouse</b>
Host	<b>Rabbit</b>
Clonality	<b>Polyclonal</b>
Calculated MW	<b>268167</b>

**Anti-NAV2 Antibody - Additional Information**

**Gene ID** 89797

**Other Names**

HELAD1; KIAA1419; POMFIL2; RAINB1; STEERIN2; Neuron navigator 2; Helicase APC down-regulated 1; Pore membrane and/or filament-interacting-like protein 2; Retinoic acid inducible in neuroblastoma 1; Steerin-2; Unc-53 homolog 2; unc53H2

**Target/Specificity**

Recognizes endogenous levels of NAV2 protein.

**Dilution**

WB~~1/500 - 1/1000

**Format**

Liquid in 0.42% Potassium phosphate, 0.87% Sodium chloride, pH 7.3, 30% glycerol, and 0.09% (W/V) sodium azide.

**Storage**

Store at -20 °C. Stable for 12 months from date of receipt

**Anti-NAV2 Antibody - Protein Information**

**Name** NAV2

**Synonyms** HELAD1, KIAA1419, POMFIL2, RAINB1, STEER

**Function**

Possesses 3' to 5' helicase activity and exonuclease activity. Involved in neuronal development, specifically in the development of different sensory organs.

**Cellular Location**

Nucleus.

**Tissue Location**

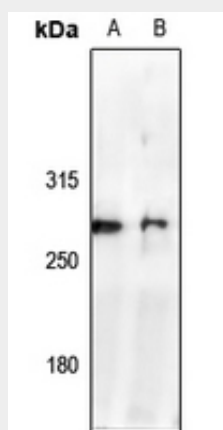
Highly expressed in the brain, kidney and liver. Also expressed in the thyroid, mammary gland, spinal cord, heart, placenta and lung. Abundantly expressed in colon cancers

### Anti-NAV2 Antibody - Protocols

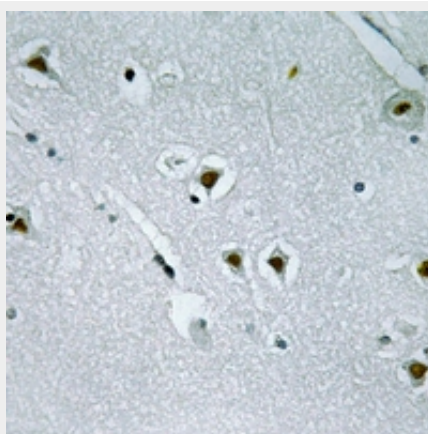
Provided below are standard protocols that you may find useful for product applications.

- [Western Blot](#)
- [Blocking Peptides](#)
- [Dot Blot](#)
- [Immunohistochemistry](#)
- [Immunofluorescence](#)
- [Immunoprecipitation](#)
- [Flow Cytometry](#)
- [Cell Culture](#)

### Anti-NAV2 Antibody - Images



Western blot analysis of NAV2 expression in AML12 (A), U87MG (B) whole cell lysates.



Immunohistochemical analysis of NAV2 staining in human brain formalin fixed paraffin embedded tissue section. The section was pre-treated using heat mediated antigen retrieval with sodium citrate buffer (pH 6.0). The section was then incubated with the antibody at room temperature and detected using an HRP conjugated compact polymer system. DAB was used as the chromogen. The section was then counterstained with haematoxylin and mounted with DPX.

### Anti-NAV2 Antibody - Background

Rabbit polyclonal antibody to NAV2