

**Anti-BAGE3 Antibody**  
Catalog # AP54038**Specification**

---

**Anti-BAGE3 Antibody - Product Information**

Application	<b>WB</b>
Primary Accession	<a href="#">Q86Y29</a>
Reactivity	<b>Human, Mouse, Rat</b>
Host	<b>Rabbit</b>
Clonality	<b>Polyclonal</b>
Calculated MW	<b>12112</b>

**Anti-BAGE3 Antibody - Additional Information****Gene ID** 85318**Other Names**

B melanoma antigen 3; Cancer/testis antigen 2.3; CT2.3

**Target/Specificity**

Recognizes endogenous levels of BAGE3 protein.

**Dilution**

WB~~1/500 - 1/1000

**Format**

Liquid in 0.42% Potassium phosphate, 0.87% Sodium chloride, pH 7.3, 30% glycerol, and 0.09% (W/V) sodium azide.

**Storage**

Store at -20 °C. Stable for 12 months from date of receipt

**Anti-BAGE3 Antibody - Protein Information****Name** BAGE3**Function**

Unknown. Candidate gene encoding tumor antigens.

**Cellular Location**

Secreted.

**Tissue Location**

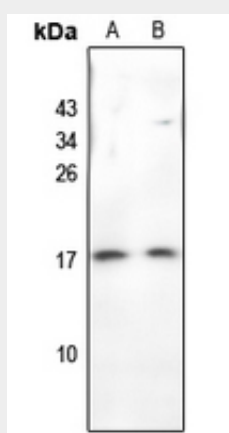
Not expressed in normal tissues except in testis. Expressed in melanoma, bladder and lung carcinomas

## Anti-BAGE3 Antibody - Protocols

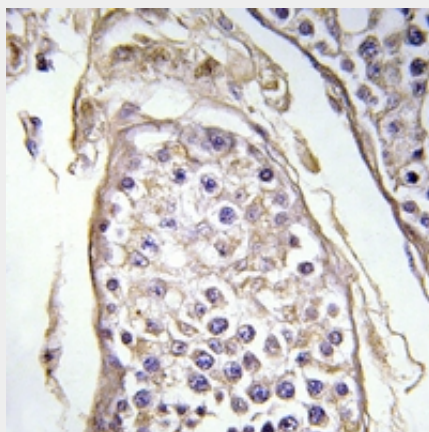
Provided below are standard protocols that you may find useful for product applications.

- [Western Blot](#)
- [Blocking Peptides](#)
- [Dot Blot](#)
- [Immunohistochemistry](#)
- [Immunofluorescence](#)
- [Immunoprecipitation](#)
- [Flow Cytometry](#)
- [Cell Culture](#)

## Anti-BAGE3 Antibody - Images



Western blot analysis of BAGE3 expression in mouse kidney (A), rat brain (B) whole cell lysates.



Immunohistochemical analysis of BAGE3 staining in human testis formalin fixed paraffin embedded tissue section. The section was pre-treated using heat mediated antigen retrieval with sodium citrate buffer (pH 6.0). The section was then incubated with the antibody at room temperature and detected using an HRP conjugated compact polymer system. DAB was used as the chromogen. The section was then counterstained with haematoxylin and mounted with DPX.

## Anti-BAGE3 Antibody - Background

Rabbit polyclonal antibody to BAGE3