

**Anti-PKI beta Antibody**  
Catalog # AP54025**Specification**

---

**Anti-PKI beta Antibody - Product Information**

Application	WB, IF
Primary Accession	<a href="#">O9C010</a>
Reactivity	Human, Mouse, Rat
Host	Rabbit
Clonality	Polyclonal
Calculated MW	8468

**Anti-PKI beta Antibody - Additional Information****Gene ID** 5570**Other Names**

PRKACN2; cAMP-dependent protein kinase inhibitor beta; PKI-beta

**Target/Specificity**

Recognizes endogenous levels of PKI beta protein.

**Dilution**

WB~~1/500 - 1/1000

IF~~1/50 - 1/200

**Format**

Liquid in 0.42% Potassium phosphate, 0.87% Sodium chloride, pH 7.3, 30% glycerol, and 0.09% (W/V) sodium azide.

**Storage**

Store at -20 °C. Stable for 12 months from date of receipt

**Anti-PKI beta Antibody - Protein Information****Name** PKIB**Synonyms** PRKACN2**Function**

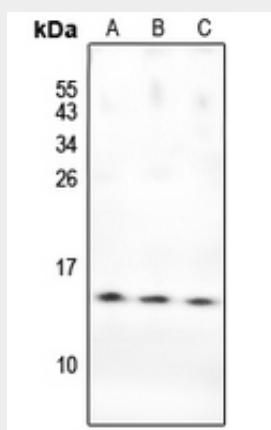
Extremely potent competitive inhibitor of cAMP-dependent protein kinase activity, this protein interacts with the catalytic subunit of the enzyme after the cAMP-induced dissociation of its regulatory chains.

**Anti-PKI beta Antibody - Protocols**

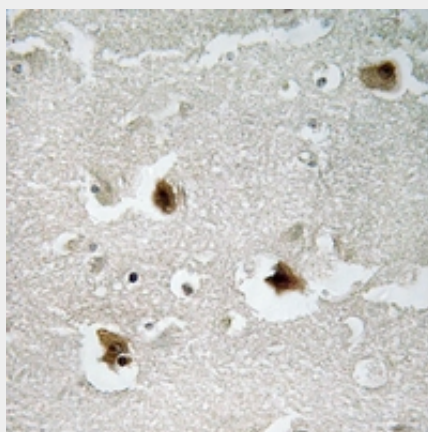
Provided below are standard protocols that you may find useful for product applications.

- [Western Blot](#)
- [Blocking Peptides](#)
- [Dot Blot](#)
- [Immunohistochemistry](#)
- [Immunofluorescence](#)
- [Immunoprecipitation](#)
- [Flow Cytometry](#)
- [Cell Culture](#)

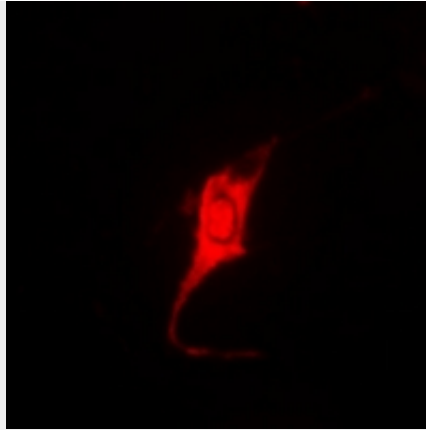
#### Anti-PKI beta Antibody - Images



Western blot analysis of PKI beta expression in BV2 (A), PC12 (B), U87MG (C) whole cell lysates.



Immunohistochemical analysis of PKI beta staining in human brain formalin fixed paraffin embedded tissue section. The section was pre-treated using heat mediated antigen retrieval with sodium citrate buffer (pH 6.0). The section was then incubated with the antibody at room temperature and detected using an HRP conjugated compact polymer system. DAB was used as the chromogen. The section was then counterstained with haematoxylin and mounted with DPX.



Immunofluorescent analysis of PKI beta staining in MCF7 cells. Formalin-fixed cells were permeabilized with 0.1% Triton X-100 in TBS for 5-10 minutes and blocked with 3% BSA-PBS for 30 minutes at room temperature. Cells were probed with the primary antibody in 3% BSA-PBS and incubated overnight at 4 °C in a humidified chamber. Cells were washed with PBST and incubated with a Alexa Fluor 594-conjugated secondary antibody (red) in PBS at room temperature in the dark.

#### **Anti-PKI beta Antibody - Background**

Rabbit polyclonal antibody to PKI beta