

**Anti-MED21 Antibody**  
Catalog # AP54024

**Specification**

---

**Anti-MED21 Antibody - Product Information**

Application	<b>WB</b>
Primary Accession	<a href="#">O13503</a>
Reactivity	<b>Human, Mouse</b>
Host	<b>Rabbit</b>
Clonality	<b>Polyclonal</b>
Calculated MW	<b>15564</b>

**Anti-MED21 Antibody - Additional Information**

**Gene ID** 9412

**Other Names**

SRB7; SURB7; Mediator of RNA polymerase II transcription subunit 21; Mediator complex subunit 21; RNA polymerase II holoenzyme component SRB7; RNAPII complex component SRB7; hSrb7

**Target/Specificity**

Recognizes endogenous levels of MED21 protein.

**Dilution**

WB~~1/500 - 1/1000

**Format**

Liquid in 0.42% Potassium phosphate, 0.87% Sodium chloride, pH 7.3, 30% glycerol, and 0.09% (W/V) sodium azide.

**Storage**

Store at -20 °C. Stable for 12 months from date of receipt

**Anti-MED21 Antibody - Protein Information**

**Name** MED21

**Synonyms** SRB7, SURB7

**Function**

Component of the Mediator complex, a coactivator involved in the regulated transcription of nearly all RNA polymerase II-dependent genes. Mediator functions as a bridge to convey information from gene-specific regulatory proteins to the basal RNA polymerase II transcription machinery. Mediator is recruited to promoters by direct interactions with regulatory proteins and serves as a scaffold for the assembly of a functional preinitiation complex with RNA polymerase II and the general transcription factors.

**Cellular Location**

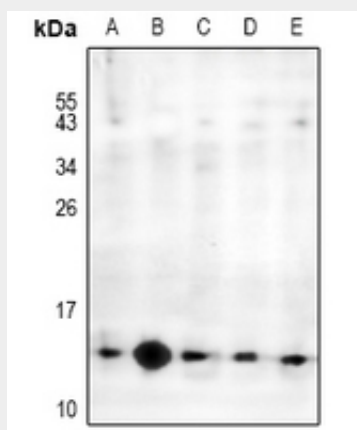
Nucleus.

### Anti-MED21 Antibody - Protocols

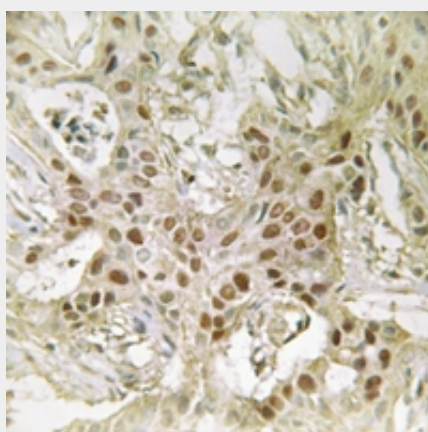
Provided below are standard protocols that you may find useful for product applications.

- [Western Blot](#)
- [Blocking Peptides](#)
- [Dot Blot](#)
- [Immunohistochemistry](#)
- [Immunofluorescence](#)
- [Immunoprecipitation](#)
- [Flow Cytometry](#)
- [Cell Culture](#)

### Anti-MED21 Antibody - Images



Western blot analysis of MED21 expression in PC12 (A), CT26 (B), HEK293T (C), SGC7901 (D), HCT116 (E) whole cell lysates.



Immunohistochemical analysis of MED21 staining in human breast cancer formalin fixed paraffin embedded tissue section. The section was pre-treated using heat mediated antigen retrieval with sodium citrate buffer (pH 6.0). The section was then incubated with the antibody at room temperature and detected using an HRP conjugated compact polymer system. DAB was used as the chromogen. The section was then counterstained with haematoxylin and mounted with DPX.

### Anti-MED21 Antibody - Background

Rabbit polyclonal antibody to MED21