

**Anti-BLCAP Antibody**  
Catalog # AP54023**Specification****Anti-BLCAP Antibody - Product Information**

Application	WB, IF
Primary Accession	<a href="#">P62952</a>
Reactivity	Human, Mouse, Rat
Host	Rabbit
Clonality	Polyclonal
Calculated MW	9876

**Anti-BLCAP Antibody - Additional Information****Gene ID** 10904**Other Names**

BC10; Bladder cancer-associated protein; Bladder cancer 10 kDa protein; Bc10

**Target/Specificity**

Recognizes endogenous levels of BLCAP protein.

**Dilution**

WB~~1/500 - 1/1000

IF~~1/50 - 1/200

**Format**

Liquid in 0.42% Potassium phosphate, 0.87% Sodium chloride, pH 7.3, 30% glycerol, and 0.09% (W/V) sodium azide.

**Storage**

Store at -20 °C. Stable for 12 months from date of receipt

**Anti-BLCAP Antibody - Protein Information****Name** BLCAP**Synonyms** BC10**Function**

Acts as a tumor suppressor; induces growth arrest at G(1)/S checkpoint and apoptosis via RB1-dependent and p53/TP53- and NF-kappa- B-independent mechanisms (PubMed: [16675915](http://www.uniprot.org/citations/16675915), PubMed: [17031575](http://www.uniprot.org/citations/17031575), PubMed: [21844121](http://www.uniprot.org/citations/21844121), PubMed: [26986503](http://www.uniprot.org/citations/26986503)). Modulates expression of genes involved in the regulation of proliferation, cell cycle and apoptosis (PubMed: [17031575](http://www.uniprot.org/citations/17031575)),

PubMed: <a href="http://www.uniprot.org/citations/21844121" target="\_blank">21844121</a>,  
PubMed: <a href="http://www.uniprot.org/citations/26986503" target="\_blank">26986503</a>).

#### Cellular Location

Cytoplasm. Nucleus. Membrane; Multi-pass membrane protein

#### Tissue Location

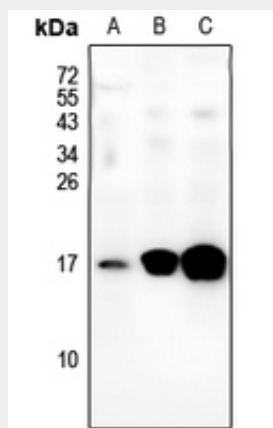
Cervical tissues (at protein level) (PubMed:22969892). Urothelium (at protein level) (PubMed:19783793, PubMed:29190807). Endothelial cells of urinary bladder vessels (at protein level) (PubMed:19783793). Urinary bladder stromal cells (at protein level) (PubMed:19783793). Cervical tissues (PubMed:16675915) Kidney (PubMed:11072240). Ubiquitous (PubMed:19908260)

#### Anti-BLCAP Antibody - Protocols

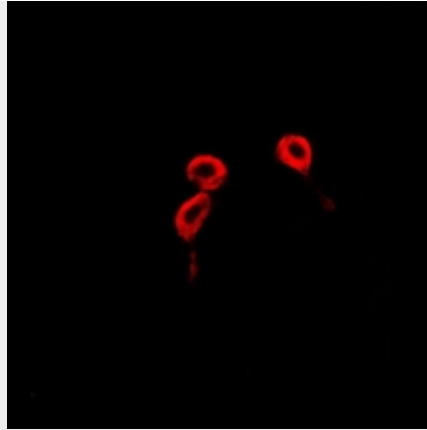
Provided below are standard protocols that you may find useful for product applications.

- [Western Blot](#)
- [Blocking Peptides](#)
- [Dot Blot](#)
- [Immunohistochemistry](#)
- [Immunofluorescence](#)
- [Immunoprecipitation](#)
- [Flow Cytometry](#)
- [Cell Culture](#)

#### Anti-BLCAP Antibody - Images



Western blot analysis of BLCAP expression in mouse kidney (A), MCF7 (B), HEK293T (C) whole cell lysates.



Immunofluorescent analysis of BLCAP staining in NIH3T3 cells. Formalin-fixed cells were permeabilized with 0.1% Triton X-100 in TBS for 5-10 minutes and blocked with 3% BSA-PBS for 30 minutes at room temperature. Cells were probed with the primary antibody in 3% BSA-PBS and incubated overnight at 4 °C in a humidified chamber. Cells were washed with PBST and incubated with a Alexa Fluor 594-conjugated secondary antibody (red) in PBS at room temperature in the dark.

#### **Anti-BLCAP Antibody - Background**

Rabbit polyclonal antibody to BLCAP