

Anti-Collagen-pan Antibody
Catalog # AP54015**Specification**

Anti-Collagen-pan Antibody - Product Information

Application	WB
Primary Accession	P02452
Other Accession	P02458 , P02461 , P20908
Reactivity	Human, Mouse, Rat
Host	Rabbit
Clonality	Polyclonal
Calculated MW	138911

Anti-Collagen-pan Antibody - Additional Information**Gene ID** 1277**Other Names**

Collagen alpha-1(I) chain; Alpha-1 type I collagen; Collagen alpha-1(II) chain; Alpha-1 type II collagen; Collagen alpha-1(III) chain

Target/Specificity

Recognizes endogenous levels of Collagen-pan protein.

Dilution

WB~~1/500 - 1/1000

Format

Liquid in 0.42% Potassium phosphate, 0.87% Sodium chloride, pH 7.3, 30% glycerol, and 0.09% (W/V) sodium azide.

Storage

Store at -20 °C. Stable for 12 months from date of receipt

Anti-Collagen-pan Antibody - Protein Information**Name** COL1A1**Function**

Type I collagen is a member of group I collagen (fibrillar forming collagen).

Cellular Location

Secreted, extracellular space, extracellular matrix {ECO:0000255|PROSITE-ProRule:PRU00793}

Tissue Location

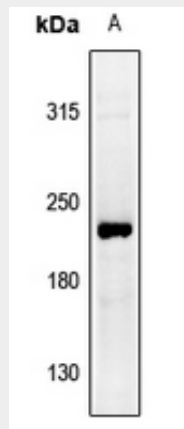
Forms the fibrils of tendon, ligaments and bones. In bones the fibrils are mineralized with calcium hydroxyapatite

Anti-Collagen-pan Antibody - Protocols

Provided below are standard protocols that you may find useful for product applications.

- [Western Blot](#)
- [Blocking Peptides](#)
- [Dot Blot](#)
- [Immunohistochemistry](#)
- [Immunofluorescence](#)
- [Immunoprecipitation](#)
- [Flow Cytometry](#)
- [Cell Culture](#)

Anti-Collagen-pan Antibody - Images



Western blot analysis of Collagen-pan expression in NIH3T3 (A) whole cell lysates.

Anti-Collagen-pan Antibody - Background

Rabbit polyclonal antibody to Collagen-pan