

Anti-CD1a/b Antibody
Catalog # AP54012**Specification**

Anti-CD1a/b Antibody - Product Information

| | |
|-------------------|--------------------------|
| Application | WB |
| Primary Accession | P06126 |
| Other Accession | P29016 |
| Reactivity | Human, Mouse, Rat |
| Host | Rabbit |
| Clonality | Polyclonal |
| Calculated MW | 37077 |

Anti-CD1a/b Antibody - Additional Information**Gene ID** 909**Other Names**

CD1A; T-cell surface glycoprotein CD1a; T-cell surface antigen T6/Leu-6; hTa1 thymocyte antigen; CD1a; CD1B; T-cell surface glycoprotein CD1b; CD1b

Target/Specificity

Recognizes endogenous levels of CD1a/b protein.

Dilution

WB~~1/500 - 1/1000

Format

Liquid in 0.42% Potassium phosphate, 0.87% Sodium chloride, pH 7.3, 30% glycerol, and 0.09% (W/V) sodium azide.

Storage

Store at -20 °C. Stable for 12 months from date of receipt

Anti-CD1a/b Antibody - Protein Information**Name** CD1A**Function**

Antigen-presenting protein that binds self and non-self lipid and glycolipid antigens and presents them to T-cell receptors on natural killer T-cells.

Cellular Location

Cell membrane; Single-pass type I membrane protein. Membrane raft; Single-pass type I membrane protein. Endosome membrane; Single- pass type I membrane protein. Note=Subject to intracellular trafficking between the cell membrane and endosomes (PubMed:11231314). Localizes to cell surface lipid rafts (PubMed:18178838).

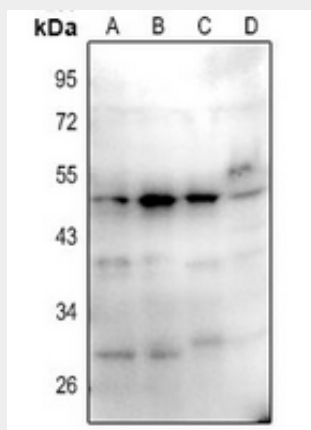
Tissue Location

Expressed on cortical thymocytes, epidermal Langerhans cells, dendritic cells, on certain T-cell leukemias, and in various other tissues.

Anti-CD1a/b Antibody - Protocols

Provided below are standard protocols that you may find useful for product applications.

- [Western Blot](#)
- [Blocking Peptides](#)
- [Dot Blot](#)
- [Immunohistochemistry](#)
- [Immunofluorescence](#)
- [Immunoprecipitation](#)
- [Flow Cytometry](#)
- [Cell Culture](#)

Anti-CD1a/b Antibody - Images

Western blot analysis of CD1a/b expression in A375 (A), HepG2 (B), AML12 (C), C6 (D) whole cell lysates.

Anti-CD1a/b Antibody - Background

Rabbit polyclonal antibody to CD1a/b