

**Anti-Cytokeratin-5/6 Antibody**  
Catalog # AP53999**Specification**

---

**Anti-Cytokeratin-5/6 Antibody - Product Information**

|                   |  |
|-------------------|--|
| Application       | <b>WB</b>  |
| Primary Accession | <a href="#">P13647</a>   |
| Other Accession   | <a href="#">P02538</a> , <a href="#">P04259</a> , <a href="#">P48668</a> |
| Reactivity        | <b>Human, Mouse, Rat</b>   |
| Host              | <b>Rabbit</b>  |
| Clonality         | <b>Polyclonal</b>  |
| Calculated MW     | <b>62378</b>   |

**Anti-Cytokeratin-5/6 Antibody - Additional Information****Gene ID** 3852**Other Names**

Keratin type II cytoskeletal 5; 58 kDa cytokekeratin; Cytokeratin-5; CK-5; Keratin-5; K5; Type-II keratin Kb5

**Target/Specificity**

Recognizes endogenous levels of Cytokeratin-5/6 protein.

**Dilution**

WB~~1/500 - 1/1000

**Format**

Liquid in 0.42% Potassium phosphate, 0.87% Sodium chloride, pH 7.3, 30% glycerol, and 0.09% (W/V) sodium azide.

**Storage**

Store at -20 °C. Stable for 12 months from date of receipt

**Anti-Cytokeratin-5/6 Antibody - Protein Information****Name** KRT5**Function**

Required for the formation of keratin intermediate filaments in the basal epidermis and maintenance of the skin barrier in response to mechanical stress (By similarity). Regulates the recruitment of Langerhans cells to the epidermis, potentially by modulation of the abundance of macrophage chemotactic cytokines, macrophage inflammatory cytokines and CTNND1 localization in keratinocytes (By similarity).

**Cellular Location**

Cytoplasm.

### Tissue Location

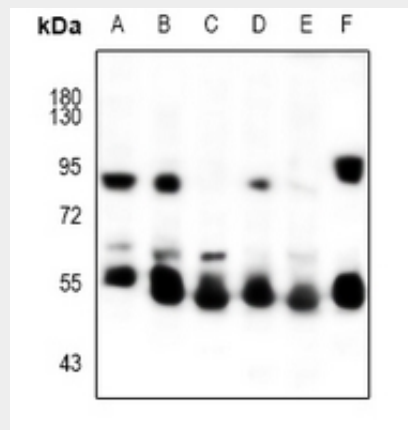
Expressed in corneal epithelium (at protein level) (PubMed:26758872). Expressed in keratinocytes (at protein level) (PubMed:20128788, PubMed:31302245).

### Anti-Cytokeratin-5/6 Antibody - Protocols

Provided below are standard protocols that you may find useful for product applications.

- [Western Blot](#)
- [Blocking Peptides](#)
- [Dot Blot](#)
- [Immunohistochemistry](#)
- [Immunofluorescence](#)
- [Immunoprecipitation](#)
- [Flow Cytometry](#)
- [Cell Culture](#)

### Anti-Cytokeratin-5/6 Antibody - Images



Western blot analysis of Cytokeratin-5/6 expression in A375 (A), EC9706 (B), HeLa (C), MCF7 (D), PC3 (E), rat ovary (F) whole cell lysates.

### Anti-Cytokeratin-5/6 Antibody - Background

Rabbit polyclonal antibody to Cytokeratin-5/6