

Anti-GPRC5C Antibody
Catalog # AP53992**Specification**

Anti-GPRC5C Antibody - Product Information

Application	WB, IF
Primary Accession	O9NQ84
Reactivity	Human, Mouse, Rat
Host	Rabbit
Clonality	Polyclonal
Calculated MW	48193

Anti-GPRC5C Antibody - Additional Information**Gene ID** 55890**Other Names**

RAIG3; G-protein coupled receptor family C group 5 member C; Retinoic acid-induced gene 3 protein; RAIG-3

Target/Specificity

Recognizes endogenous levels of GPRC5C protein.

Dilution

WB~~1/500 - 1/1000

IF~~1/50 - 1/200

Format

Liquid in 0.42% Potassium phosphate, 0.87% Sodium chloride, pH 7.3, 30% glycerol, and 0.09% (W/V) sodium azide.

Storage

Store at -20 °C. Stable for 12 months from date of receipt

Anti-GPRC5C Antibody - Protein Information**Name** GPRC5C**Synonyms** RAIG3**Function**

This retinoic acid-inducible G-protein coupled receptor provide evidence for a possible interaction between retinoid and G- protein signaling pathways.

Cellular Location

Cell membrane; Multi-pass membrane protein. Cytoplasmic vesicle membrane; Multi-pass membrane protein Note=Localized in the plasma membrane and perinuclear vesicles

Tissue Location

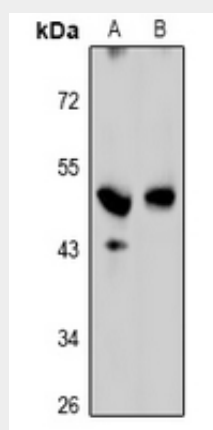
Expression is highest in the periphery, particularly in the stomach, but also in the kidney, liver, pancreas, and prostate. In brain, levels of expression are generally lower than in the periphery, with the exception of cerebellum, spinal cord, and dorsal root ganglia (DRG).

Anti-GPRC5C Antibody - Protocols

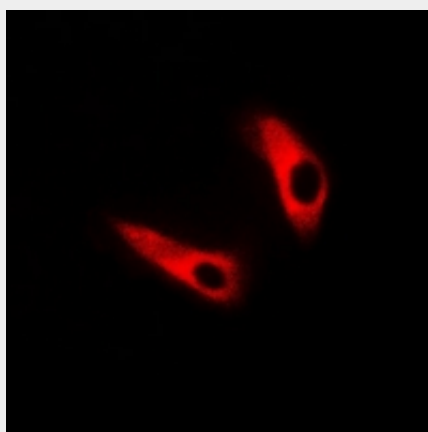
Provided below are standard protocols that you may find useful for product applications.

- [Western Blot](#)
- [Blocking Peptides](#)
- [Dot Blot](#)
- [Immunohistochemistry](#)
- [Immunofluorescence](#)
- [Immunoprecipitation](#)
- [Flow Cytometry](#)
- [Cell Culture](#)

Anti-GPRC5C Antibody - Images



Western blot analysis of GPRC5C expression in HEK293T (A), MCF7 (B) whole cell lysates.



Immunofluorescent analysis of GPRC5C staining in A549 cells. Formalin-fixed cells were permeabilized with 0.1% Triton X-100 in TBS for 5-10 minutes and blocked with 3% BSA-PBS for 30 minutes at room temperature. Cells were probed with the primary antibody in 3% BSA-PBS and incubated overnight at 4 °C in a humidified chamber. Cells were washed with PBST and incubated

with Alexa Fluor 647-conjugated secondary antibody (red) in PBS at room temperature in the dark.

Anti-GPRC5C Antibody - Background

Rabbit polyclonal antibody to GPRC5C