

Anti-STK36 Antibody
Catalog # AP53977**Specification****Anti-STK36 Antibody - Product Information**

Application	WB
Primary Accession	Q9NRP7
Reactivity	Human, Mouse, Rat
Host	Rabbit
Clonality	Polyclonal
Calculated MW	143995

Anti-STK36 Antibody - Additional Information**Gene ID** 27148**Other Names**

KIAA1278; Serine/threonine-protein kinase 36; Fused homolog

Target/Specificity

Recognizes endogenous levels of STK36 protein.

Dilution

WB~~1/500 - 1/1000

Format

Liquid in 0.42% Potassium phosphate, 0.87% Sodium chloride, pH 7.3, 30% glycerol, and 0.09% (W/V) sodium azide.

Storage

Store at -20 °C. Stable for 12 months from date of receipt

Anti-STK36 Antibody - Protein Information**Name** STK36 {ECO:0000312|EMBL:AAH26158.1}**Function**

Serine/threonine protein kinase which plays an important role in the sonic hedgehog (Shh) pathway by regulating the activity of GLI transcription factors (PubMed: [10806483](http://www.uniprot.org/citations/10806483)). Controls the activity of the transcriptional regulators GLI1, GLI2 and GLI3 by opposing the effect of SUFU and promoting their nuclear localization (PubMed: [10806483](http://www.uniprot.org/citations/10806483)). GLI2 requires an additional function of STK36 to become transcriptionally active, but the enzyme does not need to possess an active kinase catalytic site for this to occur (PubMed: [10806483](http://www.uniprot.org/citations/10806483)). Required for postnatal development, possibly by regulating the homeostasis of cerebral spinal fluid or ciliary function. Essential for construction of the central pair apparatus of motile cilia.

Cellular Location

Cytoplasm. Nucleus. Cytoplasm, cytoskeleton, cilium axoneme. Note=Low levels also present in the nucleus.

Tissue Location

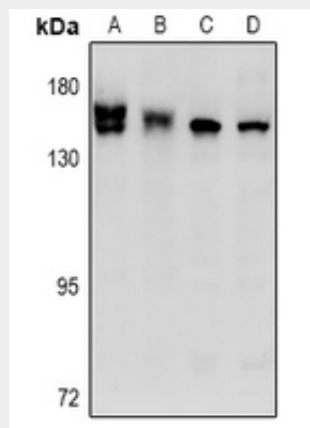
Expressed at low levels in most fetal tissues, adult ovaries and at high levels in adult testis, where it is localized in germ cells (PubMed:10806483). Expressed in respiratory epithelial cells of the lung (PubMed:28543983).

Anti-STK36 Antibody - Protocols

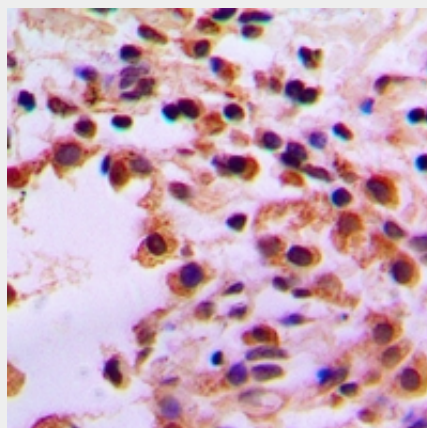
Provided below are standard protocols that you may find useful for product applications.

- [Western Blot](#)
- [Blocking Peptides](#)
- [Dot Blot](#)
- [Immunohistochemistry](#)
- [Immunofluorescence](#)
- [Immunoprecipitation](#)
- [Flow Cytometry](#)
- [Cell Culture](#)

Anti-STK36 Antibody - Images



Western blot analysis of STK36 expression in mouse testis (A), rat testis (B), LO2 (C), A549 (D) whole cell lysates.



Immunohistochemical analysis of STK36 staining in human lung cancer formalin fixed paraffin embedded tissue section. The section was pre-treated using heat mediated antigen retrieval with sodium citrate buffer (pH 6.0). The section was then incubated with the antibody at room temperature and detected using an HRP conjugated compact polymer system. DAB was used as the chromogen. The section was then counterstained with haematoxylin and mounted with DPX.

Anti-STK36 Antibody - Background

Rabbit polyclonal antibody to STK36