

**Anti-RGPD1/2/3/4/5/8 Antibody**  
Catalog # AP53974**Specification****Anti-RGPD1/2/3/4/5/8 Antibody - Product Information**

Application	WB
Primary Accession	<a href="#">POJD0</a>
Other Accession	<a href="#">POJD1</a> , <a href="#">A6NKT7</a> , <a href="#">O7Z3J3</a> , <a href="#">Q99666</a> , <a href="#">O14715</a>
Reactivity	Human, Rat
Host	Rabbit
Clonality	Polyclonal
Calculated MW	196662

**Anti-RGPD1/2/3/4/5/8 Antibody - Additional Information****Gene ID** 400966**Other Names**

RANBP2L6; RGP1; RANBP2-like and GRIP domain-containing protein 1; Ran-binding protein 2-like 6; RanBP2-like 6; RanBP2L6; RANBP2L2; RGP2; RANBP2-like and GRIP domain-containing protein 2; Ran-binding protein 2-like 2; RanBP2-like 2; RanBP2L2; RGP3; RanBP2-like and GRIP domain-containing protein 3; RGP4; RanBP2-like and GRIP domain-containing protein 4; RANBP2L1; RGP5; RGP7; RGP7; RGP7; RGP7; RANBP2L2; RGP6; RANBP2-like and GRIP domain-containing protein 5/6; Ran-binding protein 2-like 1/2; RanBP2-like 1/2; RanBP2L1; RanBP2L2; Sperm membrane protein BS-63; RANBP2ALPHA; RANBP2L1; RANBP2L3; RANBP2-like and GRIP domain-containing protein 8; Ran-binding protein 2-like 3; RanBP2-like 3; RanBP2L3

**Target/Specificity**

Recognizes endogenous levels of RGPD1/2/3/4/5/8 protein.

**Dilution**

WB~~1/500 - 1/1000

**Format**

Liquid in 0.42% Potassium phosphate, 0.87% Sodium chloride, pH 7.3, 30% glycerol, and 0.09% (W/V) sodium azide.

**Storage**

Store at -20 °C. Stable for 12 months from date of receipt

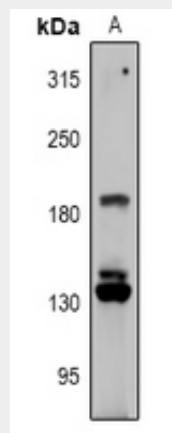
**Anti-RGPD1/2/3/4/5/8 Antibody - Protein Information****Name** RGPD1**Synonyms** RANBP2L6, RGP1

## Anti-RGPD1/2/3/4/5/8 Antibody - Protocols

Provided below are standard protocols that you may find useful for product applications.

- [Western Blot](#)
- [Blocking Peptides](#)
- [Dot Blot](#)
- [Immunohistochemistry](#)
- [Immunofluorescence](#)
- [Immunoprecipitation](#)
- [Flow Cytometry](#)
- [Cell Culture](#)

## Anti-RGPD1/2/3/4/5/8 Antibody - Images



Western blot analysis of RGPD1/2/3/4/5/8 expression in MCF7 (A) whole cell lysates.

## Anti-RGPD1/2/3/4/5/8 Antibody - Background

Rabbit polyclonal antibody to RGPD1/2/3/4/5/8