

Anti-POTEG Antibody
Catalog # AP53969**Specification**

Anti-POTEG Antibody - Product Information

Application	WB
Primary Accession	Q6S5H5
Other Accession	Q6S545 , A6NI47
Reactivity	Human, Mouse, Rat
Host	Rabbit
Clonality	Polyclonal
Calculated MW	57096

Anti-POTEG Antibody - Additional Information**Gene ID** 404785**Other Names**

POTEG; A26C2; POTE14; POTE ankyrin domain family member G; ANKRD26-like family C member 2; Prostate ovary testis-expressed protein on chromosome 14; POTE-14; POTEH; A26C3; ACTBL1; POTE22; POTE ankyrin domain family member H; ANKRD26-like family C member 3; Prostate ovary testis-expressed protein on chromosome 22; POTE-22; POTEM; Putative POTE ankyrin domain family member M

Target/Specificity

Recognizes endogenous levels of POTEG protein.

Dilution

WB~~1/500 - 1/1000

Format

Liquid in 0.42% Potassium phosphate, 0.87% Sodium chloride, pH 7.3, 30% glycerol, and 0.09% (W/V) sodium azide.

Storage

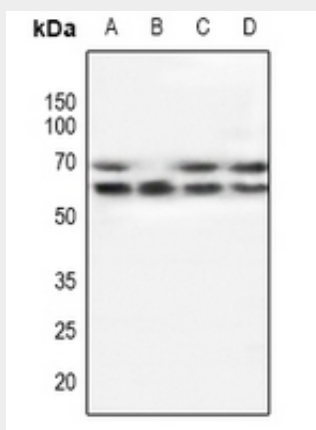
Store at -20 °C.Stable for 12 months from date of receipt

Anti-POTEG Antibody - Protein Information**Name** POTEG**Synonyms** A26C2, POTE14**Anti-POTEG Antibody - Protocols**

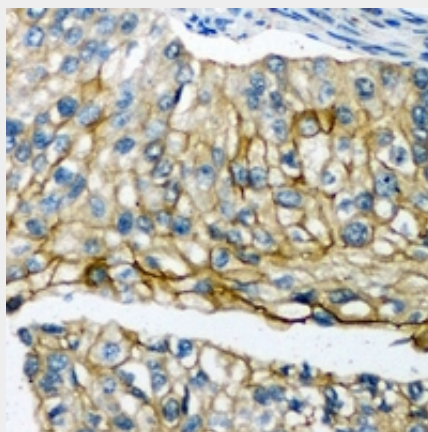
Provided below are standard protocols that you may find useful for product applications.

- [Western Blot](#)
- [Blocking Peptides](#)
- [Dot Blot](#)
- [Immunohistochemistry](#)
- [Immunofluorescence](#)
- [Immunoprecipitation](#)
- [Flow Cytometry](#)
- [Cell Culture](#)

Anti-POTEG Antibody - Images



Western blot analysis of POTEG expression in A549 (A), mouse testis (B), rat testis (C), mouse brain (D) whole cell lysates.



Immunohistochemical analysis of POTEG staining in human prostate cancer formalin fixed paraffin embedded tissue section. The section was pre-treated using heat mediated antigen retrieval with sodium citrate buffer (pH 6.0). The section was then incubated with the antibody at room temperature and detected using an HRP conjugated compact polymer system. DAB was used as the chromogen. The section was then counterstained with haematoxylin and mounted with DPX.

Anti-POTEG Antibody - Background

Rabbit polyclonal antibody to POTEG